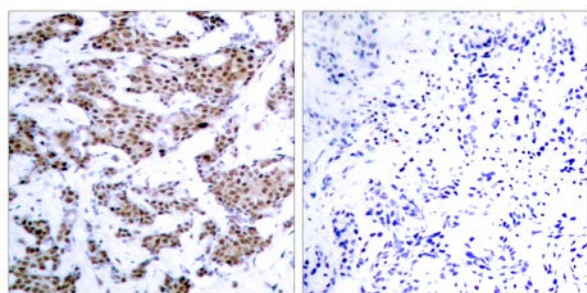




## MEF2A (Phospho-Thr312) Antibody

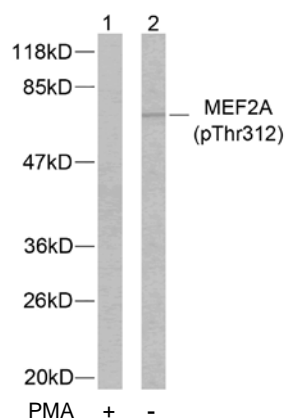
E11-7144A

- Catalog Number:** E11-7144A
- Amount:** 100µg/100µl
- Form of Antibody:** Rabbit IgG in phosphate buffered saline (without  $Mg^{2+}$  and  $Ca^{2+}$ ), pH 7.4, 150mM NaCl, 0.02% sodium azide and 50% glycerol.
- Storage/Stability:** Store at -20°C/1 year
- Immunogen:** The antiserum was produced against synthesized phosphopeptide derived from human MEF2A around the phosphorylation site of threonine 312 (L-A-T<sup>P</sup>-P-V).
- Purification:** The antibody was affinity-purified from rabbit antiserum by affinity-chromatography using epitope-specific phosphopeptide. The antibody against non-phosphopeptide was removed by chromatography using non-phosphopeptide corresponding to the phosphorylation site.
- Specificity/Sensitivity:** MEF2A (phospho-Thr312) antibody detects endogenous levels of MEF2A only when phosphorylated at threonine 312.
- Reactivity:** Human, Mouse, Rat
- Applications:** WB: 1:500~1:1000      IHC: 1:50~1:100  
ELISA: 1:20000      IP: Various Dilution
- Swiss-Prot No. :** Q02078
- References:** Kato Y, et al. (2000) J Biol Chem. 275(24): 18534-18540.  
Zhao M, et al. (1999) Mol Cell Biol. 19(1): 21-30.



P-Peptide                      -                      +

Immunohistochemical analysis of paraffin-embedded human breast carcinoma tissue using MEF2A (phospho-Thr312) antibody.



Western blot analysis of extracts from NIH/3T3 cells treated with PMA, using MEF2A (phospho-Thr312) antibody.

**For Research Use Only**