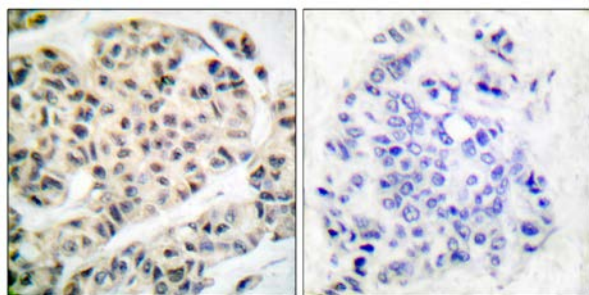




MEF2A (Phospho-Thr319) Antibody

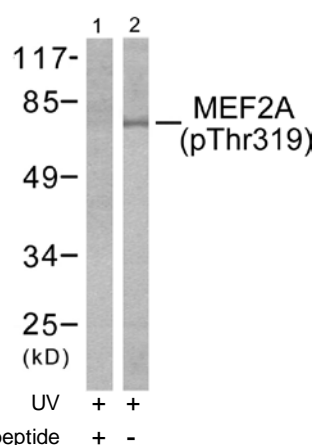
E11-7145A

- Catalog Number:** E11-7145A
- Amount:** 100µg/100µl
- Swiss-Prot No. :** Q02078
- All Names:** MEF2, Myocyte-specific enhancer factor 2A, Serum response factor-like protein 1
- All Sites:** Human: Thr319; Mouse: Thr317; Rat: Thr311
- Form of Antibody:** Rabbit IgG in phosphate buffered saline (without Mg^{2+} and Ca^{2+}), pH 7.4, 150mM NaCl, 0.02% sodium azide and 50% glycerol.
- Storage/Stability:** Store at -20°C/1 year
- Immunogen:** The antiserum was produced against synthesized phosphopeptide derived from human MEF2A around the phosphorylation site of threonine 319 (V-T-T^P-P-S).
- Purification:** The antibody was affinity-purified from rabbit antiserum by affinity-chromatography using epitope-specific phosphopeptide. The antibody against non-phosphopeptide was removed by chromatography using non-phosphopeptide corresponding to the phosphorylation site.
- Specificity/Sensitivity:** MEF2A (phospho-Thr319) antibody detects endogenous levels of MEF2A only when phosphorylated at threonine 319.
- Reactivity:** Human, Mouse, Rat
- Applications:** WB: 1:500~1:1000 IHC: 1:50~1:100
ELISA: 1:20000
- References:** Rafael Toro, J. Biol. Chem., Dec 2004; 279: 52087 - 52094.
Silvia Mora and Jeffrey E. Pessin, J. Biol. Chem., May 2000; 275: 16323.
Cyril Rauch and Paul T. Loughna, Am J Physiol Cell Physiol, Mar 2005; 288: C593 - C605.
Ming Zhao, Mol. Cell. Biol., Jan 1999; 19: 21 - 30.



P-peptide - +

Immunohistochemical analysis of paraffin-embedded human breast carcinoma tissue using MEF2A (phospho-Thr319) antibody.



Western blot analysis of extracts from K562 cells treated with UV (15mins), using MEF2A (phospho-Thr319) antibody.

For Research Use Only