



## MEK1/2(Phospho-Ser218/222) Antibody

E11-7146A

**Catalog Number:** E11-7146A

**Concentration:** 1mg/ml

**Swiss-Prot No.:** Q02750

**Other Names:** Dual specificity mitogen-activated protein kinase kinase 1; EC 2.7.12.2; ERK activator kinase 1; kinase MEK1; MAP kinase kinase 1; MAP2K1; MAPK/ERK kinase 1; MAPKK 1; MAPKK1; MEK1; MP2K1; PRKMK1

**All Sites:** Human: Ser218/Ser222; Mouse:

Ser218/Ser222; Rat: Ser218/Ser222

**Storage/Stability:** Store at -20 °C/1 year

**Form of Antibody:** Rabbit IgG in phosphate buffered saline (without  $Mg^{2+}$  and  $Ca^{2+}$ ), pH 7.4, 150mM NaCl, 0.02% sodium azide and 50% glycerol.

**Immunogen:** The antiserum was produced against synthesized phosphopeptide derived from human MEK1 around the phosphorylation site of serine Ser218/222

(I-D-S<sup>P</sup>-M-A).

**Purification:** The antibody was affinity-purified from rabbit antiserum by affinity-chromatography using epitope-specific phosphopeptide. The antibody against non-phosphopeptide was removed by chromatography using non-phosphopeptide corresponding to the phosphorylation site.

**Specificity:** MEK1/2(Phospho-Ser218/222) antibody detects endogenous levels of MEK1 only when phosphorylated at serine Ser218/222.

**Reactivity:** Human, Mouse, Rat

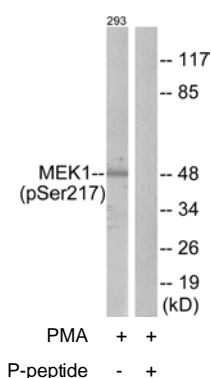
**Applications:** WB: 1:500~1:1000      IHC: 1:50~1:100  
ELISA: 1:4000

### References:

Seeger R., J. Biol. Chem. 267:25628-25631(1992).

Zheng C.-F., J. Biol. Chem. 268:11435-11439(1993).

Zheng C.-F., EMBO J. 13:1123-1131(1994).



Western blot analysis of extracts from 293 cells, treated with PMA (125ng/ml, 30mins), using MEK1/2(Phospho-Ser218/222) antibody.

**For Research Use Only**