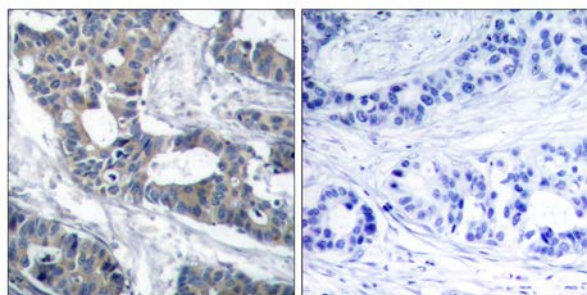




MEK1 (Ab-291) Antibody

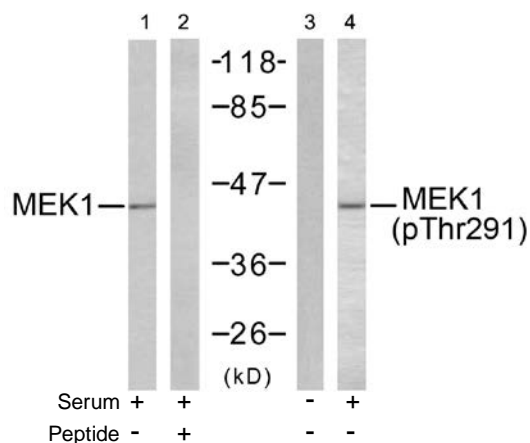
E11-7148B

- Catalog Number:** E11-7148B
- Amount:** 100µg/100µl
- Swiss-Prot No.:** Q02750
- All Names:** MAP2K1, Dual specificity mitogen-activated protein kinase kinase 1
- Form of Antibody:** Rabbit IgG in phosphate buffered saline (without Mg²⁺ and Ca²⁺), pH 7.4, 150mM NaCl, 0.02% sodium azide and 50% glycerol.
- Storage/Stability:** Store at -20°C/1 year
- Immunogen:** The antiserum was produced against synthesized non-phosphopeptide derived from human MEK1 around the phosphorylation site of threonine 291(P-R-T^P-P-G).
- Purification:** The antibody was affinity-purified from rabbit antiserum by affinity-chromatography using epitope-specific immunogen.
- Specificity/Sensitivity:** MEK1 (Ab-291) antibody detects endogenous levels of total MEK1 protein.
- Reactivity:** Human, Mouse, Rat
- Applications:** WB: 1:500~1:1000 IHC: 1:50~1:100
ELISA: 1:4000
- References:** Kevin D. Burroughs, et.al. (2003) Mol. Cancer Res; 1: 312.
Michael J. Piatelli, et.al. (2002) J. Biol. Chem; 277: 12144-12150.
Margaret M. Morgan, et.al. (2001) J. Immunol; 167: 5708.
Herbert Schramek, et.al. (2003) Am J Physiol Cell Physiol; 285: C652-C661.



Peptide - +

Immunohistochemical analysis of paraffin-embedded human breast carcinoma tissue using MEK1 (Ab-291) antibody (#B7148).



Western blot analysis of extracts from K562/A431 cells untreated or treated with Serum (10%, 30min), using MEK1 (Ab-291) antibody (Line 1 and 2) and MEK1 (phospho-Thr291) antibody (Line 3 and 4).

For Research Use Only