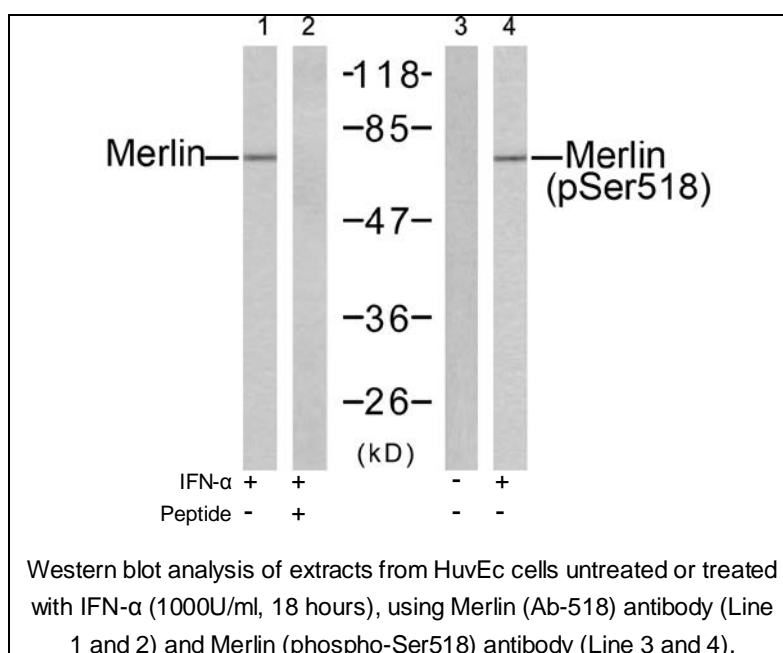




Merlin (Phospho-Ser518) Antibody

E11-7150A

- Catalog Number:** E11-7150A
- Amount:** 100µg/100µl
- Swiss-Prot No.:** P35240
- All Names:** NF2 , MERL
- All Sites:** Human: Ser518; Mouse: Ser518; Rat: Ser584
- Form of Antibody:** Rabbit IgG in phosphate buffered saline (without Mg^{2+} and Ca^{2+}), pH 7.4, 150mM NaCl, 0.02% sodium azide and 50% glycerol.
- Storage/Stability:** Store at -20 °C/1 year
- Immunogen:** The antiserum was produced against synthesized phosphopeptide derived from human Merlin around the phosphorylation site of serine 518 (R-L-S^P-M-E).
- Purification:** The antibody was affinity-purified from rabbit antiserum by affinity-chromatography using epitope-specific phosphopeptide. The antibody against non-phosphopeptide was removed by chromatography using non-phosphopeptide corresponding to the phosphorylation site.
- Specificity/Sensitivity:** Merlin (phospho-Ser518) antibody detects endogenous levels of Merlin only when phosphorylated at serine 518.
- Reactivity:** Human, Mouse, Rat
- Applications:** WB: 1:500~1:1000 ELISA: 1:4000
- References:** Guang-Hui Xiao, et.al. (2005) Mol. Cell. Biol; 25: 2384-2394.
Hi-Su Yang, et.al. (2006) Cancer Res; 66: 2708-2715.
R Bohni, et.al. (1994) J. Biol. Chem; 269: 14541-14545.
Adam J. Ratner, et.al. (2001) J. Biol. Chem; 276: 19267-19275.



For Research Use Only