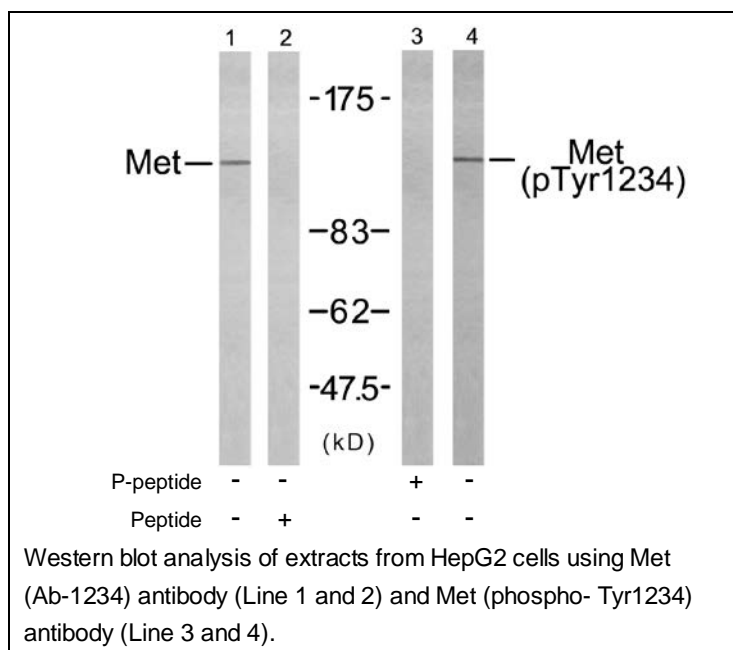




## Met (Phospho-Tyr1234) Antibody

E11-7151A

- Catalog Number:** E11-7151A
- Amount:** 100µg/100µl
- Swiss-Prot No. :** P08581
- All Names:** MET Hepatocyte growth factor receptor [Precursor]
- All Sites:** Human: Tyr1234; Mouse: Tyr1232; Rat: Tyr1235
- Form of Antibody:** Rabbit IgG in phosphate buffered saline (without  $Mg^{2+}$  and  $Ca^{2+}$ ), pH 7.4, 150mM NaCl, 0.02% sodium azide and 50% glycerol.
- Storage/Stability:** Store at -20°C/1 year
- Immunogen:** The antiserum was produced against synthesized phosphopeptide derived from human Met around the phosphorylation site of tyrosine 1234 (K-E-Y<sup>P</sup>-Y-S).
- Purification:** The antibody was affinity-purified from rabbit antiserum by affinity-chromatography using epitope-specific phosphopeptide. The antibody against non-phosphopeptide was removed by chromatography using non-phosphopeptide corresponding to the phosphorylation site.
- Specificity/Sensitivity:** Met (phospho-Tyr1234) antibody detects endogenous levels of Met only when phosphorylated at tyrosine 1234.
- Reactivity:** Human, Mouse, Rat
- Applications:** WB: 1:500~1:1000      ELISA: 1:10000
- References:** Gherardi E. et al. (2003). Proc Natl Acad Sci U S A. 100(21): 12039-12044.  
Shiu SH. et al. (2001) Proc Natl Acad Sci U S A. 98(19): 10763-10768.  
Hughes AL. et al. (2001) Genome Res. 11(5): 771-780.  
Onuchic LF. et al. (2002) Am J Hum Genet. 70(5): 1305-1317.



**For Research Use Only**