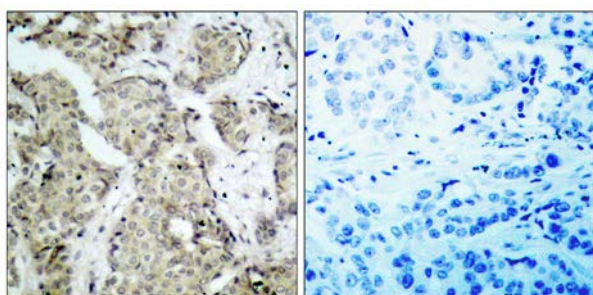




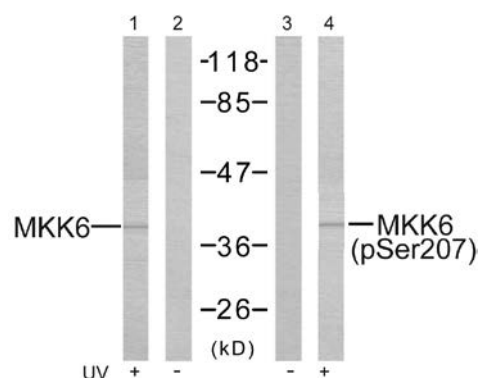
MKK6 (Phospho-Ser207) Antibody

E11-7153A

- Catalog Number:** E11-7153A
- Amount:** 100µg/100µl
- Form of Antibody:** Rabbit IgG in phosphate buffered saline (without Mg^{2+} and Ca^{2+}), pH 7.4, 150mM NaCl, 0.02% sodium azide and 50% glycerol.
- Storage/Stability:** Store at -20°C/1 year
- Immunogen:** The antiserum was produced against synthesized phosphopeptide derived from human MKK6 around the phosphorylation site of Serine207(V-D-S^P-V-A).
- Purification:** The antibody was affinity-purified from rabbit antiserum by affinity-chromatography using epitope-specific phosphopeptide. The antibody against non-phosphopeptide was removed by chromatography using non-phosphopeptide corresponding to the phosphorylation site.
- Specificity/Sensitivity:** MKK6 (Phospho-Ser207) Antibody detects endogenous levels of MKK6 only when phosphorylated at Serine207.
- Reactivity:** Human, Rat
- Applications:** WB: 1:500~1:1000 IHC: 1:50~1:100
ELISA: 1:5000
- Swiss-Prot No. :** P52564
- References:** Wang W, et al. (2002) Mol Cell Biol ; 22(10): 3389-403.
Raingeaud J, et al. (1996) Mol Cell Biol; 16(3): 1247-55.



Immunohistochemical analysis of paraffin-embedded breast carcinoma, using MKK6 (Phospho-Ser207) Antibody. Left: Untreated; Right: Treated with synthesized phosphopeptide.



Western blot analysis of the extracts from MDA-MB-435 cells treated or untreated with UV using MKK3 (Ab-207) Antibody (#B7153) and MKK6 (Phospho-Ser207) Antibody (# A7153). Line1: Using # B7153; Line2: Using # B7153; Line3: Using # A7153; Line4: Using # A7153.

For Research Use Only