



MSK1 (Phospho-Ser376) Antibody

E11-7155A

Catalog Number: E11-7155A

Amount: 100µg/100µl

Swiss-Prot No. : O75582

All Names: 90 kDa ribosomal protein S6 kinase, , polypeptide 5, KS6A5, MSPK1, Nuclear mitogen- and stress-activated protein kinase-1, RLPK, RPS6KA5, kinase MSK1, ribosomal protein S6 kinase, polypeptide V

All Sites: Human: Ser376; Mouse: Ser375; Rat: Ser350

Form of Antibody: Rabbit IgG in phosphate buffered saline (without Mg^{2+} and Ca^{2+}), pH 7.4, 150mM NaCl, 0.02% sodium azide and 50% glycerol.

Storage/Stability: Store at -20°C/1 year

Immunogen: The antiserum was produced against synthesized phosphopeptide derived from human MSK1 around the phosphorylation site of serine 376 (G-Y-S^P-F-V).

Purification: The antibody was affinity-purified from rabbit antiserum by affinity-chromatography using epitope-specific phosphopeptide. The antibody against non-phosphopeptide was removed by chromatography using non-phosphopeptide corresponding to the phosphorylation site.

Specificity/Sensitivity: MSK1 (phospho-Ser376) antibody detects endogenous levels of MSK1 only when phosphorylated at serine 376.

Reactivity: Human, Mouse, Rat

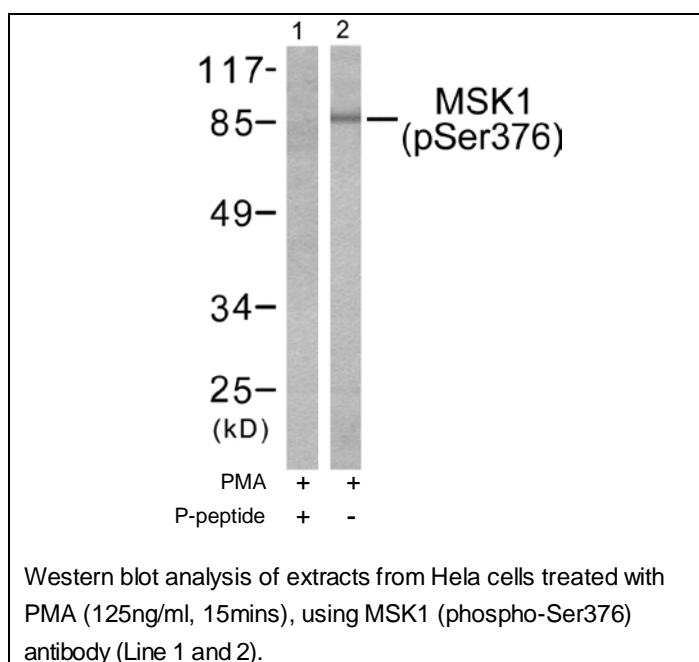
Applications: WB: 1:500~1:1000 ELISA: 1:20000

References: Jeffrey W. Ryder, J. Biol. Chem., Jan 2000; 275: 1457.

John M. Kyriakis and Joseph Avruch, Physiol Rev, Apr 2001; 81: 807.

Sharron Schneider, Am J Physiol Heart Circ Physiol, Feb 2001; 280: 499.

HUGO CEULEMANS and MATHIEU BOLLEN, Physiol Rev, Jan 2004; 84: 1.



For Research Use Only