



mTOR (Phospho-Ser2448) Antibody

E11-7156A

Catalog Number: E11-7156A

Amount: 100µg/100µl

Swiss-Prot No.: P42345

All Names: FRAP, FRAP1, FRAP2, RAFT2, Rapamycin target protein, kinase mTOR

All Sites: Human: Ser2448; Mouse: Ser2448; Rat: Ser2448

Form of Antibody: Rabbit IgG in phosphate buffered saline (without Mg^{2+} and Ca^{2+}), pH 7.4, 150mM NaCl, 0.02% sodium azide and 50% glycerol.

Storage/Stability: Store at -20°C/1 year

Immunogen: The antiserum was produced against synthesized phosphopeptide derived from human mTOR around the phosphorylation site of serine 2448 (T-D-S^P-Y-S).

Purification: The antibody was affinity-purified from rabbit antiserum by affinity-chromatography using epitope-specific phosphopeptide. The antibody against non-phosphopeptide was removed by chromatography using non-phosphopeptide corresponding to the phosphorylation site.

Specificity/Sensitivity: mTOR (phospho-Ser2448) antibody detects endogenous levels of mTOR only when phosphorylated at serine 2448.

Reactivity: Human, Mouse, Rat

Applications: WB: 1:500~1:1000 IHC: 1:50~1:100

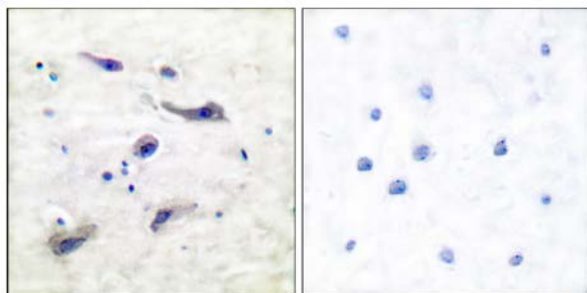
ELISA: 1:40000

References: herine M. Hannan, Mol. Cell. Biol., Dec 2003; 23: 8862 - 8877.

Dos D. Sarbassov, Science, Feb 2005; 307: 1098 - 1101.

Susan W. Y. Cheng, J. Biol. Chem., Apr 2004; 279: 15719 - 15722.

Charles H. Lang, Am J Physiol Endocrinol Metab, Dec 2003; 285: E1205 - E1215.

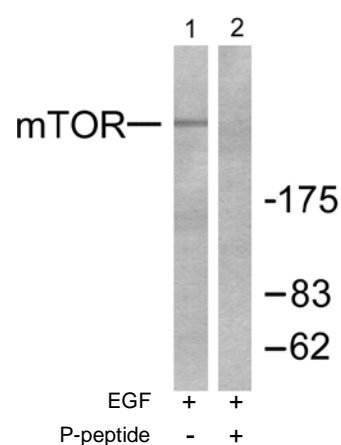


P-peptide

-

+

Immunohistochemical analysis of paraffin-embedded human brain tissue using mTOR (phospho-Ser2448) antibody.



Western blot analysis of extracts from HeLa cells treated with EGF (200ng/ml, 30mins), using mTOR (phospho-Ser2448) (Line 1 and 2).

For Research Use Only