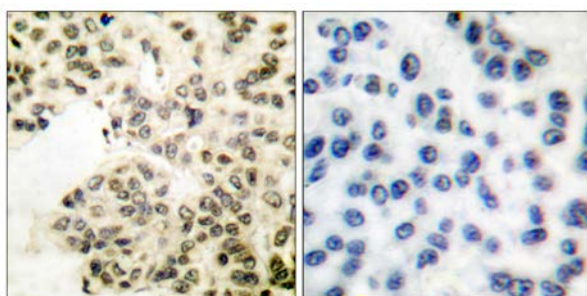




## NF-κB p65 (Phospho-Ser311) Antibody

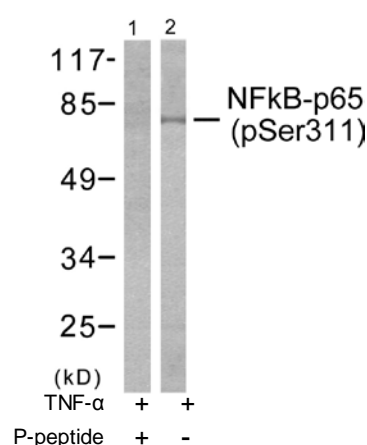
E11-7163A

- Catalog Number:** E11-7163A
- Amount:** 100µg/100µl
- Swiss-Prot No. :** Q04206
- All Names:** NFκB3, Nuclear factor NF-kappa-B p65 subunit, RELA, TF65, Transcription factor p65, p65
- All Sites:** Human: Ser311; Mouse: Ser311; Rat: Ser311
- Form of Antibody:** Rabbit IgG in phosphate buffered saline (without  $Mg^{2+}$  and  $Ca^{2+}$ ), pH 7.4, 150mM NaCl, 0.02% sodium azide and 50% glycerol.
- Storage/Stability:** Store at -20°C/1 year
- Immunogen:** The antiserum was produced against synthesized phosphopeptide derived from human NF-κB p65 around the phosphorylation site of serine 311 (F-K-S<sup>P</sup>-I-M).
- Purification:** The antibody was affinity-purified from rabbit antiserum by affinity-chromatography using epitope-specific phosphopeptide. The antibody against non-phosphopeptide was removed by chromatography using non-phosphopeptide corresponding to the phosphorylation site.
- Specificity/Sensitivity:** NF-κB p65 (phospho-Ser311) antibody detects endogenous levels of NF-κB p65 only when phosphorylated at serine 311.
- Reactivity:** Human, Mouse, Rat
- Applications:** WB: 1:500~1:1000      IHC: 1:50~1:100  
ELISA: 1:40000
- References:** Moon Kyoo Jang, J. Biol. Chem., Jun 2001; 276: 20005 - 20010.  
Lluís Espinosa, Mol. Biol. Cell, Feb 2003; 14: 491.  
Srinivas J. Kammanadiminti, Infect. Immun., Apr 2007; 75: 1765 - 1770.  
D. Gregory, J. Virol., Dec 2004; 78: 13582 - 13590.



P-peptide                      -                      +

Immunohistochemical analysis of paraffin-embedded human breast carcinoma tissue using NF-κB p65 (phospho-Ser311) antibody.



Western blot analysis of extracts from 293 cells treated with TNF-α (20ng/ml, 30mins), using NF-κB p65 (phospho-Ser311) antibody (Line 1 and 2).

**For Research Use Only**