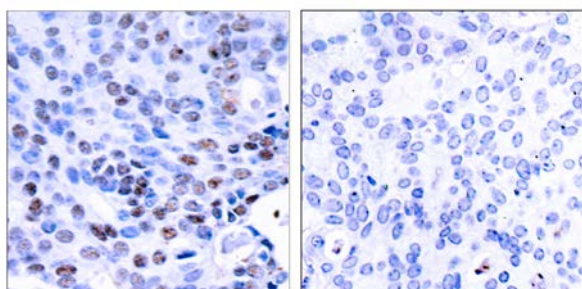




NF-κB p105/p50 (Ab-337) Antibody

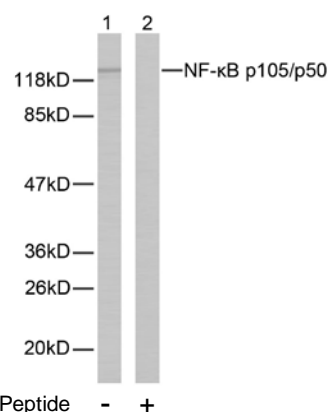
E11-7166B

- Catalog Number:** E11-7166B
- Amount:** 100µg/100µl
- Form of Antibody:** Rabbit IgG in phosphate buffered saline (without Mg^{2+} and Ca^{2+}), pH 7.4, 150mM NaCl, 0.02% sodium azide and 50% glycerol.
- Storage/Stability:** Store at -20°C/1 year
- Immunogen:** The antiserum was produced against synthesized non-phosphopeptide derived from human NF-κB p105/p50 around the phosphorylation site of serine 337.
- Purification:** The antibody was affinity-purified from rabbit antiserum by affinity-chromatography using epitope-specific immunogen.
- Specificity/Sensitivity:** NF-κB p105/p50 (Ab-337) antibody detects endogenous levels of total NF-κB p105/p50 protein.
- Reactivity:** Human, Mouse, Rat
- Applications:** WB: 1:200~1:500 IHC: 1:50~1:100
ELISA: 1:20000
- Swiss-Prot No. :** P19838
- References:** Hou S, et al. (2003) J Biol Chem. 278(46): 45994-45998.
Baeuerle P A, et al. (1994) Annu Rev Immunol. 12:141-179.
Baeuerle P A, et al. (1996) Cell 87:13-20.
Haskill S, et al. (1991) Cell 65:1281-1289.



Peptide - +

Immunohistochemical analysis of paraffin-embedded human breast carcinoma tissue using NF-κB p105/p50 (Ab-337) antibody.



Western blot analysis of extracts from MDA-MB-435 cells using NF-κB p105/p50 (Ab-337) antibody.

For Research Use Only