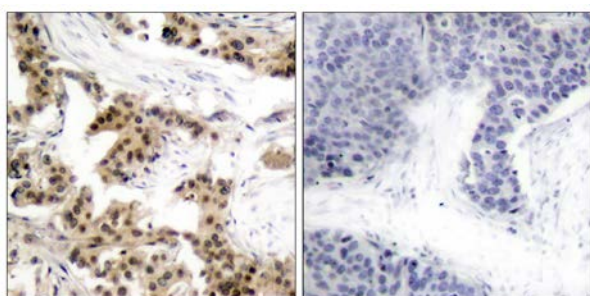




NF-κBp105/p50(Phospho-Ser893)Antibody

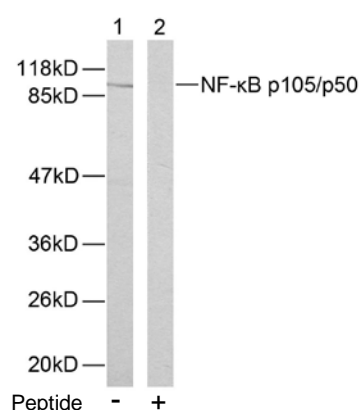
E11-7167A

- Catalog Number:** E11-7167A
- Amount:** 100μg/100μl
- Form of Antibody:** Rabbit IgG in phosphate buffered saline (without Mg^{2+} and Ca^{2+}), pH 7.4, 150mM NaCl, 0.02% sodium azide and 50% glycerol.
- Storage/Stability:** Store at -20°C/1 year
- Immunogen:** The antiserum was produced against synthesized phosphopeptide derived from human NF-κB p105/p50 around the phosphorylation site of serine 893.
- Purification:** The antibody was affinity-purified from rabbit antiserum by affinity-chromatography using epitope-specific phosphopeptide. The antibody against non-phosphopeptide was removed by chromatography using non-phosphopeptide corresponding to the phosphorylation site.
- Specificity/Sensitivity:** NF-κB p105/p50 (phospho-Ser893) antibody detects endogenous levels of NF-κB p105/p50 only when phosphorylated at serine 893.
- Reactivity:** Human
- Applications:** WB: 1:500~1:1000 IHC: 1:50~1:100
ELISA: 1:20000
- Swiss-Prot No. :** P19838
- References:** Hou S, et al. (2003) J Biol Chem. 278(46): 45994-45998.
Baeuerle P A, et al. (1994) Annu Rev Immunol. 12:141-179.
Baeuerle P A, et al. (1996) Cell 87:13-20.
Haskill S, et al. (1991) Cell 65:1281-1289.



P-Peptide - +

Immunohistochemical analysis of paraffin-embedded human breast carcinoma tissue using NF-κB p105/p50 (phospho-Ser893) antibody.



Western blot analysis of extracts from HeLa cells using NF-κB p105/p50 (Ab-893) antibody.

For Research Use Only