



NF-κB p65 (Phospho-Ser276) Antibody

E11-7169A

Catalog Number: E11-7169A

Amount: 100μg/100μl

Form of Antibody: Rabbit IgG in phosphate buffered saline (without Mg^{2+} and Ca^{2+}), pH 7.4, 150mM NaCl, 0.02% sodium azide and 50% glycerol.

Storage/Stability: Store at -20°C/1 year

Immunogen: The antiserum was produced against synthesized phosphopeptide derived from human NF-κB p65 around the phosphorylation site of serine 276.

Purification: The antibody was affinity-purified from rabbit antiserum by affinity-chromatography using epitope-specific phosphopeptide. The antibody against non-phosphopeptide was removed by chromatography using non-phosphopeptide corresponding to the phosphorylation site.

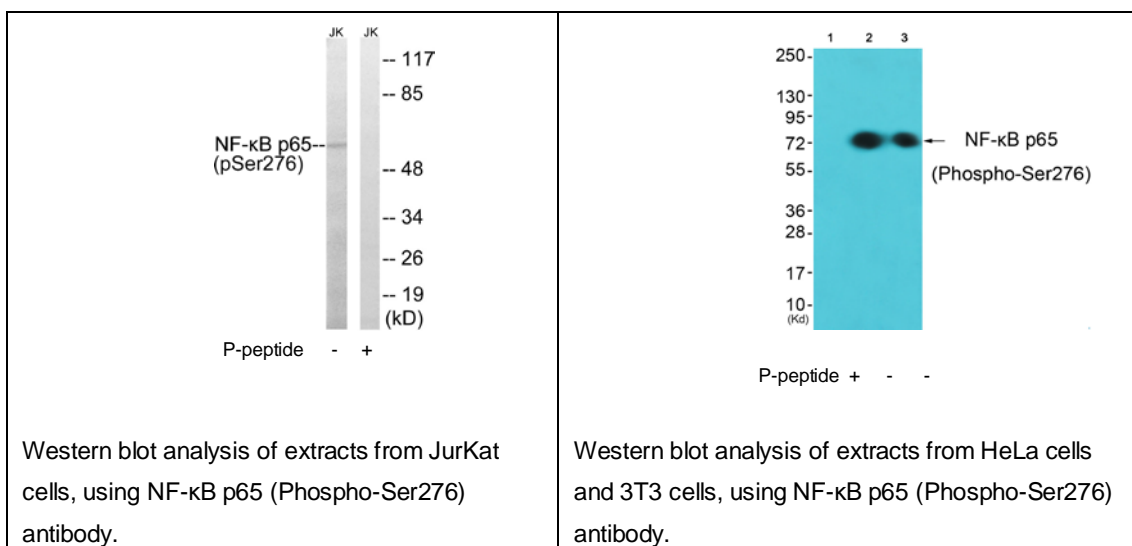
Specificity/Sensitivity: NF-κB p65 (Phospho-Ser276) Antibody detects endogenous levels of NF-κB p65 only when phosphorylated at serine 276.

Reactivity: Human, Mouse, Rat

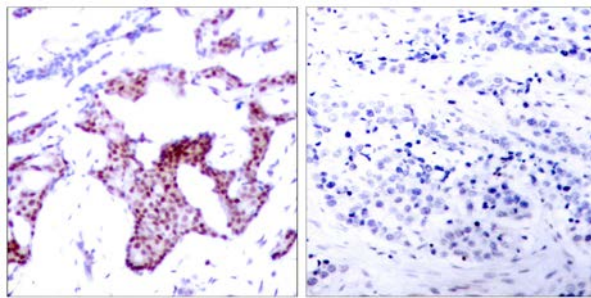
Applications: WB: 1:500~1:3000 IHC: 1:50~1:100
ELISA: 1:20000 IP: Various Dilution

Swiss-Prot No. : Q04206

References: Baeuerle P A, et al. (1994) Annu Rev Immunol. 12:141-179.
Baeuerle P A, et al. (1996) Cell 87:13-20.
Haskill S, et al. (1991) Cell 65:1281-1289.



For Research Use Only



P-peptide

-

+

Immunohistochemical analysis of paraffin-embedded human breast carcinoma tissue, using NF- κ B p65 (Phospho-Ser276) antibody.