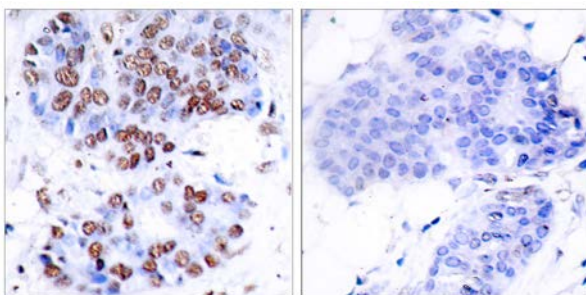




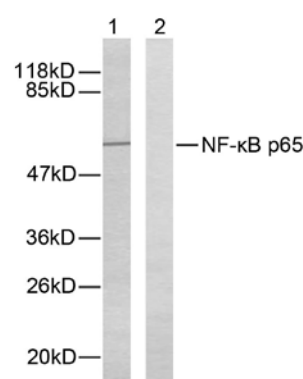
## NF-κB p65(Ab-276) Antibody

E11-7169B

- Catalog Number:** E11-7169B
- Amount:** 100μg/100μl
- Form of Antibody:** Rabbit IgG in phosphate buffered saline (without Mg<sup>2+</sup> and Ca<sup>2+</sup>), pH 7.4, 150mM NaCl, 0.02% sodium azide and 50% glycerol.
- Storage/Stability:** Store at -20°C/1 year
- Immunogen:** The antiserum was produced against synthesized non-phosphopeptide derived from human NF-κB p65 around the phosphorylation site of Serine 276.
- Purification:** The antibody was affinity-purified from rabbit antiserum by affinity-chromatography using epitope-specific immunogen.
- Specificity/Sensitivity:** NF-κB p65 (Ab-276) Antibody detects endogenous levels of NF-κB p65 protein around Serine 276.
- Reactivity:** Human, Mouse, Rat
- Applications:** WB: 1:500~1:1000    IHC: 1:50~1:100    IF: 1:100~1:500  
ELISA: 1:10000    IP: Various Dilution
- Swiss-Prot No. :** Q04206
- References:** Baeuerle P A, et al. (1994) Annu Rev Immunol. 12:141-179.  
Baeuerle P A, et al. (1996) Cell 87:13-20.  
Haskill S, et al. (1991) Cell 65:1281-1289.  
Thompson J E, et al. (1995) Cell 80: 573-582.



Immunohistochemical analysis of paraffin-embedded breast carcinoma. Left: Using NF-κB p65 (Ab-276) Antibody (#B7169); Right: The same antibody preincubated with synthesized peptide.



Western blot analysis of extracts from HeLa cells. Line1: Using NF-κB p65 (Ab-276) Antibody (#B7169); Line2: The same antibody preincubated with synthesized peptide.

**For Research Use Only**