



## P38 MAPK (Phospho-Tyr182) Antibody

E11-7179A

**Catalog Number:** E11-7179A

**Amount:** 100µg/100µl

**Swiss-Prot No. :** Q16539

**All Names:** Mitogen-activated protein kinase p38 alpha; MAP kinase p38 alpha; Cytokine suppressive anti-inflammatory drug-binding protein; CSAID-binding protein; CSBP; MAX-interacting protein 2; MAP kinase MXI2; SAPK2A

**All Sites:** Human: Tyr182; Mouse: Tyr182; Rat: Tyr182

**Form of Antibody:** Rabbit IgG in phosphate buffered saline (without  $Mg^{2+}$  and  $Ca^{2+}$ ), pH 7.4, 150mM NaCl, 0.02% sodium azide and 50% glycerol.

**Storage/Stability:** Store at -20°C/1 year

**Immunogen:** The antiserum was produced against synthesized phosphopeptide derived from human P38 MAPK around the phosphorylation site of tyrosine 182 (T-G-Y<sup>P</sup>-V-A).

**Purification:** The antibody was affinity-purified from rabbit antiserum by affinity-chromatography using epitope-specific phosphopeptide. The antibody against non-phosphopeptide was removed by chromatography using non-phosphopeptide corresponding to the phosphorylation site.

**Specificity/Sensitivity:** P38 MAPK (Phospho-Tyr182) antibody detects endogenous levels of P38 MAPK only when phosphorylated at tyrosine 182.

**Reactivity:** Human, Mouse, Rat

**Applications:** WB: 1:500~1:1000 IHC: 1:50~1:100

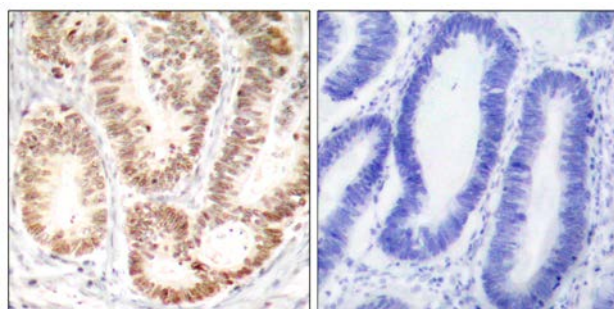
ELISA: 1:10000

**References:** Midori Fujishiro, et al. (2001) J. Biol. Chem; 276: 19800-19806.

Ji Li, et al. (2005) Circ. Res; 97: 872-879.

Rocky Pramanik, et al. (2003) J. Biol. Chem; 278: 4831-4839.

Tomoyuki Inoue, et al. (2005) J. Immunol; 174: 4301-4306.

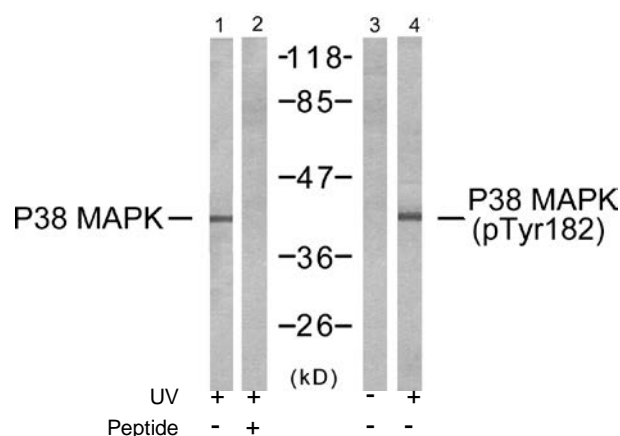


P-peptide

-

+

Immunohistochemical analysis of paraffin-embedded human colon carcinoma tissue using P38 MAPK (Phospho-Tyr182) antibody.



Western blot analysis of extracts from K562 cells, untreated or treated with UV, using P38 MAPK (Ab-182) antibody (Line 1 and 2) and P38 MAPK (Phospho-Tyr182) antibody (Line 3 and 4).

**For Research Use Only**