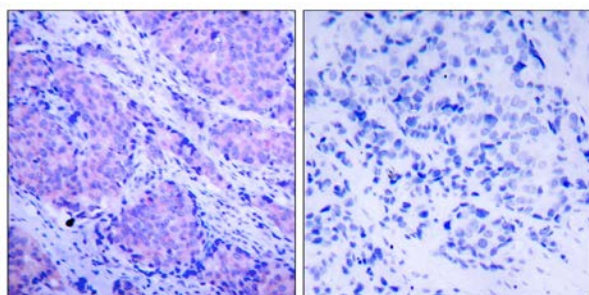




PDK1 (Phospho-Ser241) Antibody

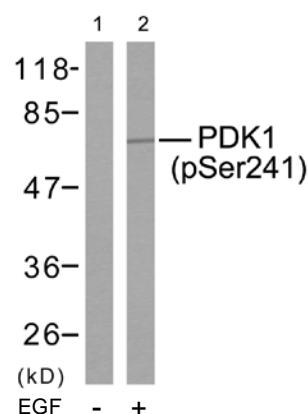
E11-7195A

- Catalog Number:** E11-7195A
- Amount:** 100µg/100µl
- Form of Antibody:** Rabbit IgG in phosphate buffered saline (without Mg^{2+} and Ca^{2+}), pH 7.4, 150mM NaCl, 0.02% sodium azide and 50% glycerol.
- Storage/Stability:** Store at -20°C/1 year
- Immunogen:** The antiserum was produced against synthesized phosphopeptide derived from human PDK1 around the phosphorylation site of serine 241 (A-N-S^P-F-V).
- Purification:** The antibody was affinity-purified from rabbit antiserum by affinity-chromatography using epitope-specific phosphopeptide. The antibody against non-phosphopeptide was removed by chromatography using non-phosphopeptide corresponding to the phosphorylation site.
- Specificity/Sensitivity:** PDK1 (phospho-Ser241) antibody detects endogenous levels of PDK1 only when phosphorylated at serine 241.
- Reactivity:** Human, Mouse, Rat
- Applications:** WB: 1:500~1:1000 IHC: 1:50~1:100
ELISA: 1:20000 IP: Various Dilution
- Swiss-Prot No. :** O15530
- References:** Scheid MP, et al. (2005) Mol Cell Biol; 25(6): 2347-63.
Chen H, et al. (2001) Biochemistry; 40(39): 11851-9.
Sato S, et al. (2002) J Biol Chem; 277(42): 39360-7.
Lim MA, et al. (2003) Proc Natl Acad Sci U S A; 100(24): 14006-11.



P-Peptide - +

Immunohistochemical analysis of paraffin-embedded human breast carcinoma tissue using PDK1 (phospho-Ser241) antibody.



Western blot analysis of extracts from MDA-MB-435 cells using PDK1 (phospho-Ser241) antibody.

For Research Use Only