



PKC δ (Phospho-Ser645) Antibody

E11-7196A

Catalog Number: E11-7196A

Amount: 100 μ g/100 μ l

Swiss-Prot No.: Q05655

All Names: PRKCD, Protein kinase C delta type

All Sites: Human: Ser645; Mouse: Ser643; Rat: Ser643

Form of Antibody: Rabbit IgG in phosphate buffered saline (without Mg²⁺ and Ca²⁺), pH 7.4, 150mM NaCl, 0.02% sodium azide and 50% glycerol.

Storage/Stability: Store at -20 °C/1 year

Immunogen: The antiserum was produced against synthesized phosphopeptide derived from human PKC δ around the phosphorylation site of serine 645 (R-L-S^P-Y-S).

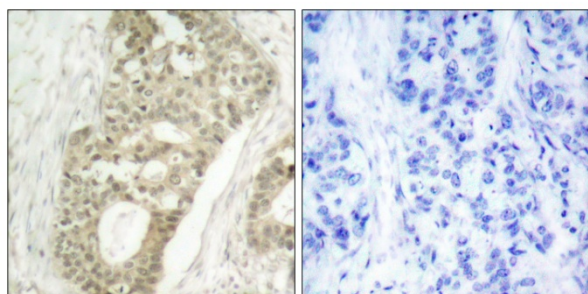
Purification: The antibody was affinity-purified from rabbit antiserum by affinity-chromatography using epitope-specific phosphopeptide. The antibody against non-phosphopeptide was removed by chromatography using non-phosphopeptide corresponding to the phosphorylation site.

Specificity/Sensitivity: PKC δ (phospho-Ser645) antibody detects endogenous levels of PKC δ only when phosphorylated at serine 645.

Reactivity: Human, Mouse, Rat

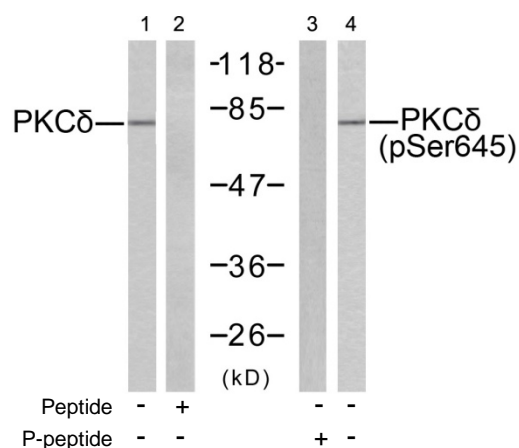
Applications: WB: 1:500~1:1000 IHC: 1:50~1:100
ELISA: 1:10000

References: Kei Sakamoto, et.al. (2003) Am J Physiol Endocrinol Metab; 285: E1081-E1088.
Ling Zhang, et.al. (2004) J. Biol. Chem; 279: 28315-28319.
Kristof Van Kolen et.al. (2006) FEBS J; 273: 1843-1854.
Martin Villalba, et.al. (2002) J. Cell Biol; 157: 253.



P-Peptide - +

Immunohistochemical analysis of paraffin-embedded human breast carcinoma tissue using PKC δ (phospho-Ser645) antibody.



Western blot analysis of extracts from MCF7 cells, using PKC δ (Ab-645) antibody (Line 1 and 2) and PKC δ (phospho-Ser645) antibody (Line 3 and 4).

For Research Use Only