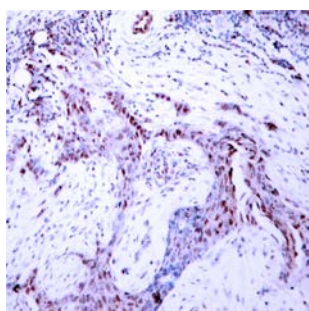


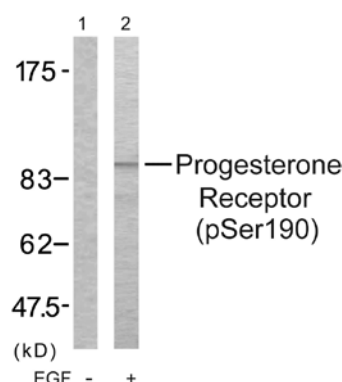


Progesterone Receptor (Phospho-S190) Antibody

E11-7200A

Catalog Number: E11-7200A**Amount:** 100µg/100µl**Form of Antibody:** Rabbit IgG in phosphate buffered saline (without Mg^{2+} and Ca^{2+}), pH 7.4, 150mM NaCl, 0.02% sodium azide and 50% glycerol.**Storage/Stability:** Store at -20°C/1 year**Immunogen:** The antiserum was produced against synthesized phosphopeptide derived from human Progesterone Receptor around the phosphorylation site of Serine 190 (G-L-S^P-P-A).**Purification:** The antibody was affinity-purified from rabbit antiserum by affinity-chromatography using epitope-specific phosphopeptide. The antibody against non-phosphopeptide was removed by chromatography using non-phosphopeptide corresponding to the phosphorylation site.**Specificity/Sensitivity:** Progesterone Receptor (Phospho-Ser190) Antibody detects endogenous levels of Progesterone Receptor only when phosphorylated at Serine 190.**Reactivity:** Human**Applications:** WB: 1:500~1:1000 IHC: 1:50~1:100
ELISA: 1:20000**Swiss-Prot No. :** P06401**References:** Narayanan R, et al. (2005) Mol Cell Biol; 25(8): 2885-98.
Knotts TA, et al. (2001) J Biol Chem; 276(11): 8475-83.
Clemm DL, et al. (2000) Mol Endocrinol; 14(1): 52-65.
Zhang Y, et al. (1997) Mol Endocrinol; 11(6): 823-32.

Immunohistochemical analysis of paraffin-embedded breast carcinoma, using Progesterone Receptor (Phospho-Ser190) Antibody.



Western blot analysis of extracts using Progesterone Receptor(Phospho-Ser190) Antibody. Line1: The extracts from COS7 cells untreated; Line2: The extracts from COS7 cells treated with EGF.

For Research Use Only