



## Raf1 (Phospho-Ser338) Antibody

E11-7207A

**Catalog Number:** E11-7207A

**Amount:** 100µg/100µl

**Swiss-Prot No. :** P04049

**All Names:** C-RAF, C-Raf, CRAF, Protein kinase raf 1, RAF proto-oncogene serine/threonine-protein kinase, RAF-1, RAF1, Raf proto-oncogene serine/threonine-protein kinase, Raf-1, Similar to murine leukemia viral (V-raf-1) oncogene homolog 1, kinase Raf1

**All Sites:** Human: Ser338; Mouse: Ser338; Rat: Ser338

**Form of Antibody:** Rabbit IgG in phosphate buffered saline (without  $Mg^{2+}$  and  $Ca^{2+}$ ), pH 7.4, 150mM NaCl, 0.02% sodium azide and 50% glycerol.

**Storage/Stability:** Store at -20°C/1 year

**Immunogen:** The antiserum was produced against synthesized phosphopeptide derived from human Raf1 around the phosphorylation site of serine 338 (R-D-S<sup>P</sup>-S-Y).

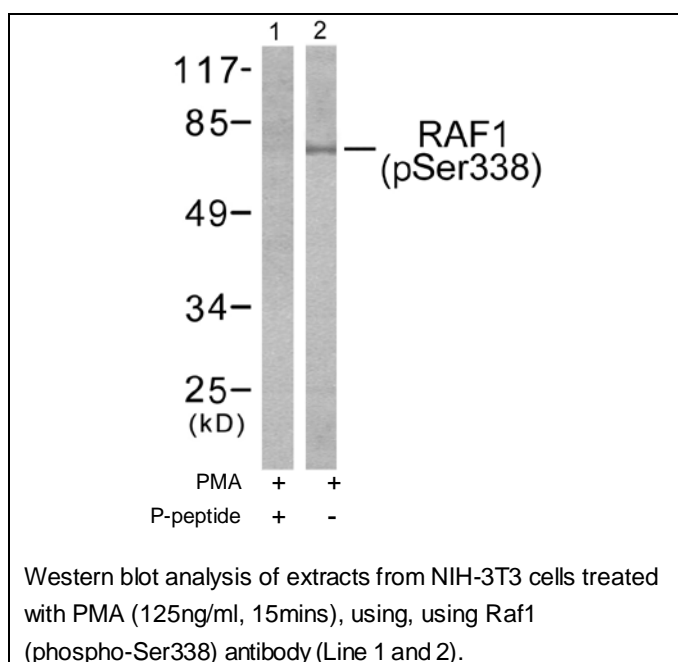
**Purification:** The antibody was affinity-purified from rabbit antiserum by affinity-chromatography using epitope-specific phosphopeptide. The antibody against non-phosphopeptide was removed by chromatography using non-phosphopeptide corresponding to the phosphorylation site.

**Specificity/Sensitivity:** Raf1 (phospho-Ser338) antibody detects endogenous levels of Raf1 only when phosphorylated at serine 338.

**Reactivity:** Human, Mouse, Rat

**Applications:** WB: 1:500~1:1000 ELISA: 1:40000

**References:** Wolf Oehrl, J. Biol. Chem., May 2003; 278: 17819 - 17826.  
Deanna G. Adams, J. Biol. Chem., Dec 2005; 280: 42644 - 42654.  
Michael A. Beazely, Mol. Pharmacol., Jan 2005; 67: 250 - 259.  
Dwayne L. Barber, Blood, Jan 1997; 89: 55 - 64.



**For Research Use Only**