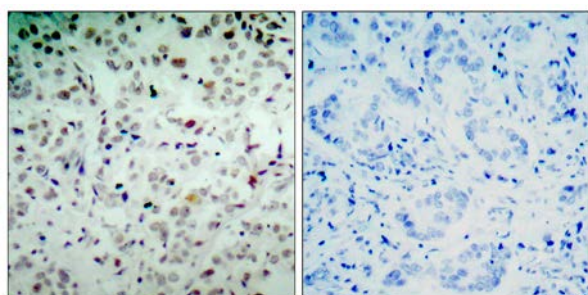




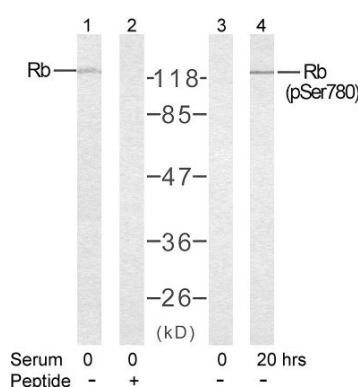
Rb (Phospho-Ser780) Antibody

E11-7208A

- Catalog Number:** E11-7208A
- Amount:** 100µg/100µl
- Form of Antibody:** Rabbit IgG in phosphate buffered saline (without Mg^{2+} and Ca^{2+}), pH 7.4, 150mM NaCl, 0.02% sodium azide and 50% glycerol.
- Storage/Stability:** Store at -20°C/1 year
- Immunogen:** The antiserum was produced against synthesized phosphopeptide derived from human Rb around the phosphorylation site of Serine 780(T-L-S^P-P-I).
- Purification:** The antibody was affinity-purified from rabbit antiserum by affinity-chromatography using epitope-specific phosphopeptide. The antibody against non-phosphopeptide was removed by chromatography using non-phosphopeptide corresponding to the phosphorylation site.
- Specificity/Sensitivity:** Rb(Phospho-Ser780) Antibody detects endogenous levels of Rb only when phosphorylated at Serine 780.
- Reactivity:** Human, Mouse, Rat
- Applications:** WB: 1:500~1:1000 IHC: 1:50~1:100
ELISA: 1:10000
- Swiss-Prot No. :** P06400
- References:** Roesch A, et al.(2005) Mod Pathol. 18(4): 565-572.
Huang H, et al.(2004)Oncogene. 23(12): 2161-2176.
Kitagawa M, et al.(1996)EMBO J. 15(24): 7060-7069.



Immunohistochemical analysis of paraffin-embedded breast carcinoma, using Rb (Phospho-Ser780) Antibody. Left: Untreated; Right: Treated with synthesized phosphopeptide.



Western blot analysis of extracts from K562 cells treated or untreated with serum using Rb(Ab-780) Antibody and Rb (Phospho-Ser780) Antibody.

For Research Use Only