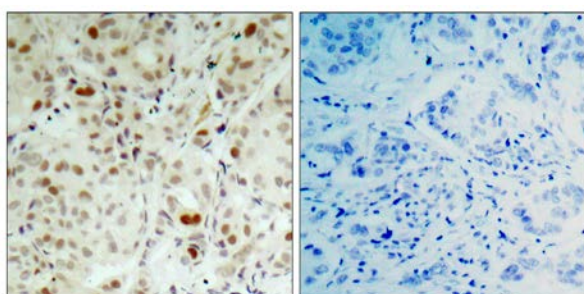




Rb (Phospho-Ser807) Antibody

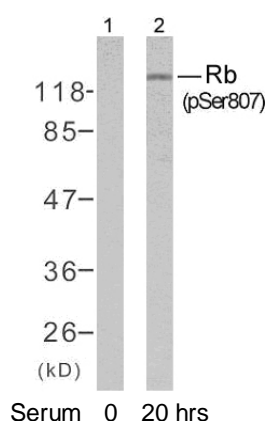
E11-7210A

- Catalog Number:** E11-7210A
- Amount:** 100µg/100µl
- Form of Antibody:** Rabbit IgG in phosphate buffered saline (without Mg^{2+} and Ca^{2+}), pH 7.4, 150mM NaCl, 0.02% sodium azide and 50% glycerol.
- Storage/Stability:** Store at -20°C/1 year
- Immunogen:** The antiserum was produced against synthesized phosphopeptide derived from human Rb around the phosphorylation site of serine 807 (Y-I-S^P-P-L).
- Purification:** The antibody was affinity-purified from rabbit antiserum by affinity-chromatography using epitope-specific phosphopeptide. The antibody against non-phosphopeptide was removed by chromatography using non-phosphopeptide corresponding to the phosphorylation site.
- Specificity/Sensitivity:** Rb (phospho-Ser807) antibody detects endogenous levels of Rb only when phosphorylated at serine 807.
- Reactivity:** Human, Mouse, Rat
- Applications:** WB: 1:500~1:1000 IHC: 1:50~1:100
ELISA: 1:10000
- Swiss-Prot No. :** P06400
- References:** Roesch A, et al. (2005) *Mod Pathol.* 18(4): 565-572.
Chadee DN, et al. (2004) *Nat Cell Biol.* 6(8): 770-776.
Knudsen ES, et al. (1997) *Mol Cell Biol.* 17(10): 5771-5783.
Knudsen ES, et al. (1996) *J Biol Chem.* 271(14): 8313-8320.



P-Peptide - +

Immunohistochemical analysis of paraffin-embedded human breast carcinoma tissue using Rb (phospho-Ser807) antibody.



Western blot analysis of extracts from K562 cells untreated or treated with 10% serum after 20 hours of starvation, using Rb (phospho-Ser807) antibody.

For Research Use Only