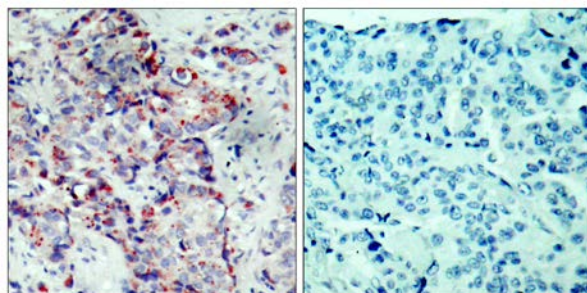




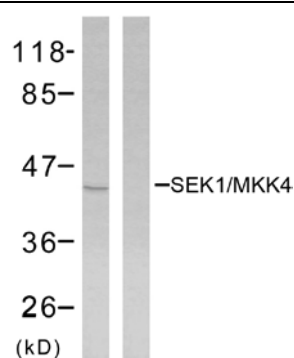
SEK1/MKK4 (Phospho-Ser80) Antibody

E11-7215A

- Catalog Number:** E11-7215A
- Amount:** 100µg/100µl
- Form of Antibody:** Rabbit IgG in phosphate buffered saline (without Mg^{2+} and Ca^{2+}), pH 7.4, 150mM NaCl, 0.02% sodium azide and 50% glycerol.
- Storage/Stability:** Store at -20°C/1 year
- Immunogen:** The antiserum was produced against synthesized phosphopeptide derived from human SEK1/MKK4 around the phosphorylation site of serine 80 (T-H-S^P-I-E).
- Purification:** The antibody was affinity-purified from rabbit antiserum by affinity-chromatography using epitope-specific phosphopeptide. The antibody against non-phosphopeptide was removed by chromatography using non-phosphopeptide corresponding to the phosphorylation site.
- Specificity/Sensitivity:** SEK1/MKK4 (phospho-Ser80) antibody detects endogenous levels of SEK1/MKK4 only when phosphorylated at serine 80.
- Reactivity:** Human, Mouse, Rat
- Applications:** WB: 1:500~1:1000 IHC:1:50~1:100 ELISA: 1:5000
- Swiss-Prot No. :** P45985
- References:** Park HS, et al. (2002) J Biol Chem; 277(4): 2573-8.



Immunohistochemical analysis of paraffin-embedded breast carcinoma. Left: Using SEK1/MKK4 (Phospho-Ser80) Antibody. Right: The same antibody preincubated with synthesized phosphopeptide.



Western blot analysis of extracts from NIH/3T3 cells using SEK1/MKK4 (phospho-Ser80) antibody.

For Research Use Only