



## SEK1/MKK4 (Phospho-Thr261) Antibody

E11-7216A

**Catalog Number:** E11-7216A

**Concentration:** 1mg/ml

**Swiss-Prot No.:** P45985

**Other Names:** c-Jun N- terminal kinase kinase 1; C-JUN N-terminal kinase kinase 1; Dual specificity mitogen-activated protein kinase kinase 4; EC 2.7.12.2; JNK activating kinase 1; JNK kinase 1; JNKK; JNKK 1; JNKK1; kinase SEK1; MAP kinase kinase 4; MAP2K4; MAPK/ERK kinase 4; MAPKK 4; MKK4; MP2K4; PRKMK4; SAPK/ERK kinase 1; SEK1; SERK1

**All Sites:** Human: Thr261; Mouse: Thr259; Rat: Thr259

**Storage/Stability:** Store at -20°C/1 year

**Form of Antibody:** Rabbit IgG in phosphate buffered saline (without Mg<sup>2+</sup> and Ca<sup>2+</sup>), pH 7.4, 150mM NaCl, 0.02% sodium azide and 50% glycerol.

**Immunogen:** The antiserum was produced against synthesized phosphopeptide derived from human SEK1/MKK4 around the phosphorylation site of threonine

261 (A-K-T<sup>P</sup>-R-D).

**Purification:** The antibody was affinity-purified from rabbit antiserum by affinity-chromatography using epitope-specific phosphopeptide. The antibody against non-phosphopeptide was removed by chromatography using non-phosphopeptide corresponding to the phosphorylation site.

**Specificity:** SEK1/MKK4 (Phospho-Thr261) antibody detects endogenous levels of SEK1/MKK4 only when phosphorylated at threonine 261.

**Reactivity:** Human, Mouse, Rat

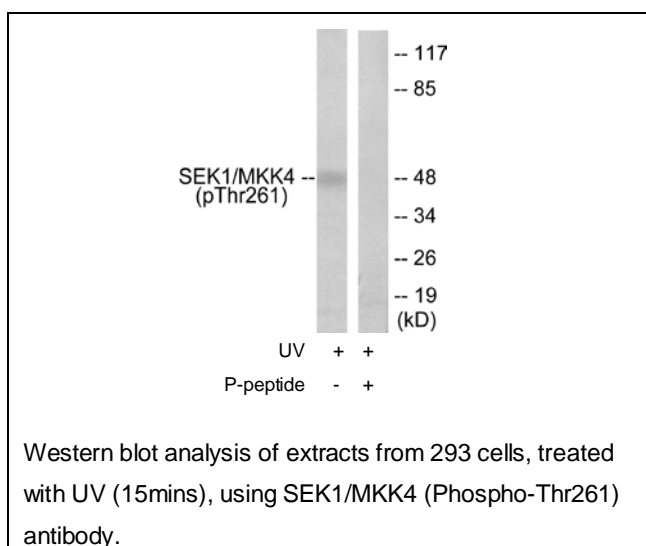
**Applications:** WB: 1:500~1:1000 IHC: 1:50~1:100  
ELISA: 1:10000

### References:

Lin A., Science 268:286-290(1995).

Derijard B., Science 267:682-685(1995).

Su G.H., Cancer Res. 58:2339-2342(1998).



**For Research Use Only**