



SMC1 (Phospho-Ser957) Antibody

E11-7217A

Catalog Number: E11-7217A**Concentration:** 1mg/ml**Swiss-Prot No.:** Q14683**Other Names:** Chromosome segregation protein SmcB; DXS423E; KIAA0178; Sb1.8; SB1.8/DXS423E protein; SM1A; SMC1A; SMC1alpha protein; SMC1L1; Structural maintenance of chromosome 1-like 1 protein**All Sites:** Human: Ser957; Mouse: Ser957**Storage/Stability:** Store at -20 °C/1 year**Form of Antibody:** Rabbit IgG in phosphate buffered saline (without Mg^{2+} and Ca^{2+}), pH 7.4, 150mM NaCl, 0.02% sodium azide and 50% glycerol.**Immunogen:** The antiserum was produced against synthesized phosphopeptide derived from human SMC1 around the phosphorylation site of serine 957 (G-S-S^P-Q-G).**Purification:** The antibody was affinity-purified from

rabbit antiserum by affinity-chromatography using

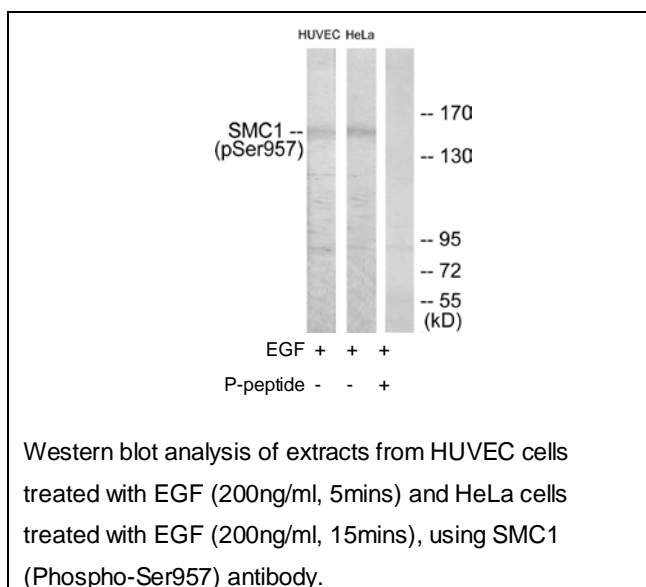
epitope-specific phosphopeptide. The antibody against non-phosphopeptide was removed by chromatography using non-phosphopeptide corresponding to the phosphorylation site.

Specificity: SMC1 (Phospho-Ser957) antibody detects endogenous levels of SMC1 only when phosphorylated at serine 957.**Reactivity:** Human, Mouse**Applications:** WB: 1:500~1:1000 IHC: 1:50~1:100
ELISA: 1:10000**References:**

Rocques P.J., Hum. Mol. Genet. 4:243-249(1995).

Nagase T., DNA Res. 3:17-24(1996).

Nakajima D., DNA Res. 9:99-106(2002).

**For Research Use Only**