



SMC1 (Ab-957) Antibody

E11-7217B

Catalog Number: E11-7217B

Concentration: 1mg/ml

Swiss-Prot No.: Q14683

Other Names: Chromosome segregation protein SmcB; DXS423E; KIAA0178; Sb1.8; SB1.8/DXS423E protein; SM1A; SMC1A; SMC1alpha protein; SMC1L1; Structural maintenance of chromosome 1-like 1 protein

Storage/Stability: Store at -20°C/1 year

Form of Antibody: Rabbit IgG in phosphate buffered saline (without Mg^{2+} and Ca^{2+}), pH 7.4, 150mM NaCl, 0.02% sodium azide and 50% glycerol.

Immunogen: The antiserum was produced against synthesized non-phosphopeptide derived from human SMC1 around the phosphorylation site of serine 957

(G-S-S^P-Q-G).

Purification: The antibody was affinity-purified from rabbit antiserum by affinity-chromatography using epitope-specific immunogen.

Specificity: SMC1 (Ab-957) antibody detects endogenous levels of total SMC1 protein.

Reactivity: Human, Mouse

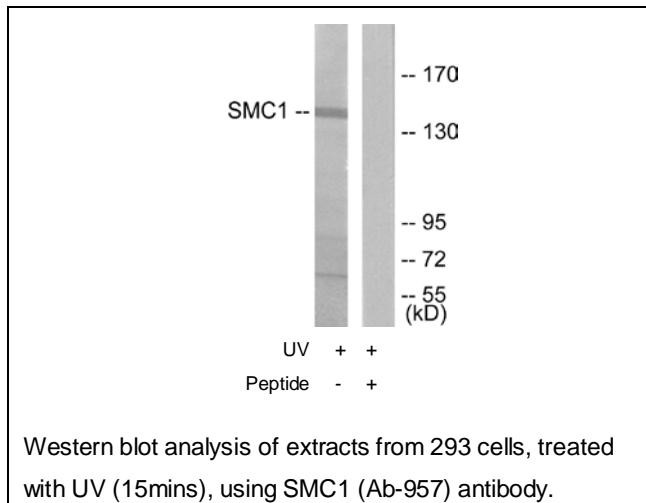
Applications: WB: 1:500~1:1000 IHC: 1:50~1:100
ELISA: 1:10000

References:

Rocques P.J., Hum. Mol. Genet. 4:243-249(1995).

Nagase T., DNA Res. 3:17-24(1996).

Nakajima D., DNA Res. 9:99-106(2002).



For Research Use Only