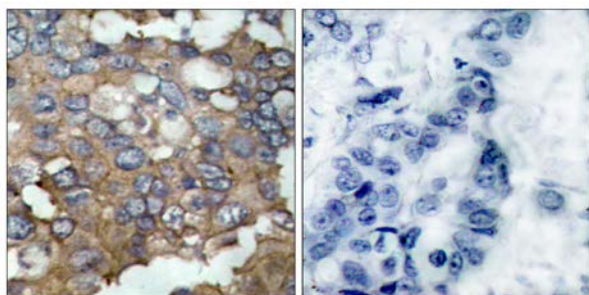




## Src (Ab-529) Antibody

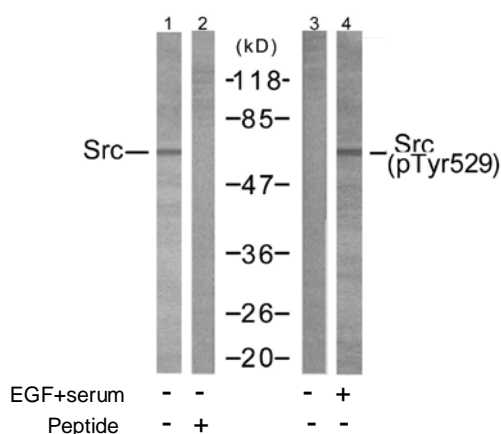
E11-7220B

- Catalog Number:** E11-7220B
- Amount:** 100µg/100µl
- Form of Antibody:** Rabbit IgG in phosphate buffered saline (without Mg<sup>2+</sup> and Ca<sup>2+</sup>), pH 7.4, 150mM NaCl, 0.02% sodium azide and 50% glycerol.
- Storage/Stability:** Store at -20 °C/1 year
- Immunogen:** The antiserum was produced against synthesized non-phosphopeptide derived from human Src around the phosphorylation site of tyrosine 529.
- Purification:** The antibody was affinity-purified from rabbit antiserum by affinity-chromatography using epitope-specific immunogen.
- Specificity/Sensitivity:** Src (Ab-529) antibody detects endogenous levels of total Src protein.
- Reactivity:** Human, Mouse, Rat
- Applications:** WB: 1:500~1:1000      IHC: 1:50~1:100  
ELISA: 1:5000
- Swiss-Prot No. :** P12931
- References:** Pyper J.M., (1985) Mol. Cell. Biol. 5:831-838.  
Pyper J.M.(1990) Mol. Cell. Biol. 10:2035-2040.  
Xu W., (1997).Nature 385:595-602.  
Benes C.H., (2005) Cell 121:271-280.



Peptide                      -                      +

Immunohistochemical analysis of paraffin-embedded human breast carcinoma tissue using Src (Ab-529) antibody (#B7220).



Western blot analysis of extracts from 293 cells using Src (Ab-529) antibody (Line1 and 2) and Src (phospho-Tyr529) antibody (Line 3 and 4).

**For Research Use Only**