



Stathmin 1 (Phospho-Ser15) Antibody

E11-7230A

Catalog Number: E11-7230A

Concentration: 1mg/ml

Swiss-Prot No.: P16949

Other Names: LAG; LAP18; Leukemia-associated gene protein; Leukemia-associated phosphoprotein p18; Metablastin; Oncoprotein 18; Op18; Phosphoprotein p19; pp17; pp19; PR22; Pr22 protein; Prosolin; stathmin; STN1

All Sites: Human: Ser16; Mouse: Ser16; Rat: Ser16

Storage/Stability: Store at -20°C/1 year

Form of Antibody: Rabbit IgG in phosphate buffered saline (without Mg^{2+} and Ca^{2+}), pH 7.4, 150mM NaCl, 0.02% sodium azide and 50% glycerol.

Immunogen: The antiserum was produced against synthesized phosphopeptide derived from human Stathmin 1 around the phosphorylation site of serine 15 (R-A-S^P-G-Q).

Purification: The antibody was affinity-purified from rabbit antiserum by affinity-chromatography using epitope-specific phosphopeptide. The antibody against non-phosphopeptide was removed by chromatography using non-phosphopeptide corresponding to the phosphorylation site.

Specificity: Stathmin 1 (Phospho-Ser15) antibody detects endogenous levels of Stathmin 1 only when phosphorylated at serine 15.

Reactivity: Human, Mouse, Rat

Applications: WB: 1:500~1:1000 IHC: 1:50~1:100

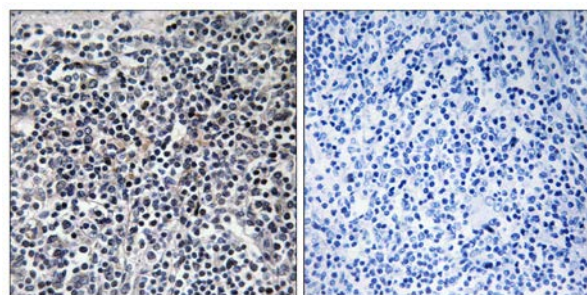
IF: 1:100~1:500 ELISA: 1:10000

References:

Zhu X.-X., J. Biol. Chem. 264:14556-14560(1989).

Maucuer A., FEBS Lett. 264:275-278(1990).

Melhem R.F., J. Biol. Chem. 266:17747-17753(1991).

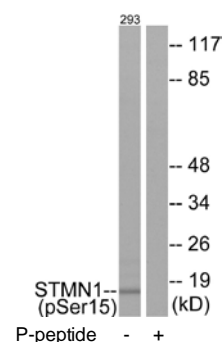


P-peptide

-

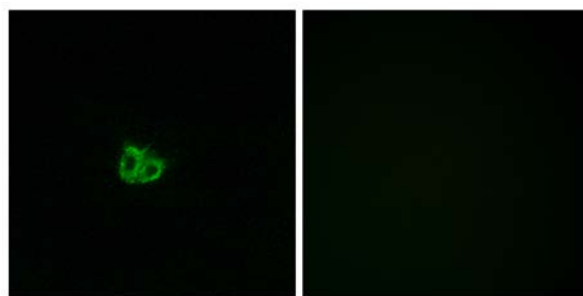
+

Immunohistochemistry analysis of paraffin-embedded human thymus gland tissue using Stathmin 1 (Phospho-Ser15) antibody.



Western blot analysis of extracts from 293 cells, using Stathmin 1 (Phospho-Ser15) antibody.

For Research Use Only



P-peptide

-

+

Immunofluorescence analysis of COS-7 cells, using
Stathmin 1 (Phospho-Ser15) antibody.