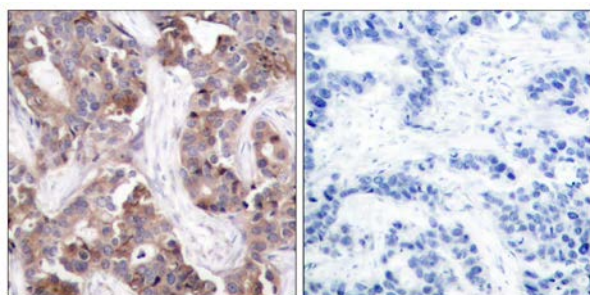




## Stathmin 1 (Phospho-Ser24) Antibody

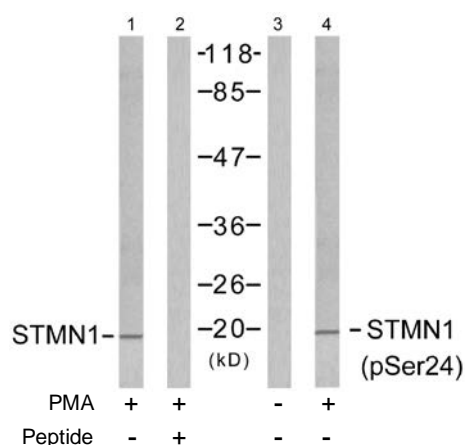
E11-7231A

- Catalog Number:** E11-7231A
- Amount:** 100µg/100µl
- Swiss-Prot No.:** P16949
- All Names:** stathmin 1, LAG, LAP18, Leukemia-associated gene protein, Leukemia-associated phosphoprotein p18, Metablastin, Oncoprotein 18, Op18, PR22, Phosphoprotein p19, Pr22 protein, Prosolin, STN1, pp17, pp19, stathmin
- All Sites:** Human: Ser24; Mouse: Ser24; Rat: Ser24
- Form of Antibody:** Rabbit IgG in phosphate buffered saline (without  $Mg^{2+}$  and  $Ca^{2+}$ ), pH 7.4, 150mM NaCl, 0.02% sodium azide and 50% glycerol.
- Storage/Stability:** Store at -20°C/1 year
- Immunogen:** The antiserum was produced against synthesized phosphopeptide derived from human Stathmin 1 around the phosphorylation site of serine 24 (I-L-S<sup>P</sup>-P-R).
- Purification:** The antibody was affinity-purified from rabbit antiserum by affinity-chromatography using epitope-specific phosphopeptide. The antibody against non-phosphopeptide was removed by chromatography using non-phosphopeptide corresponding to the phosphorylation site.
- Specificity/Sensitivity:** Stathmin 1 (phospho-Ser24) antibody detects endogenous levels of Stathmin 1 only when phosphorylated at serine 24.
- Reactivity:** Human, Mouse, Rat
- Applications:** WB: 1:500~1:1000      IHC: 1:50~1:100  
ELISA: 1:10000
- References:** Boehm M, et al. (2002) EMBO J 21(13): 3390-3401.  
Vadlamudi RK, et al. (2005) Mol Cell Biol 25(9): 3726-3736.  
Zilfou JT, et al. (2001) Mol Cell Biol 21(12): 3974-3985.



P-Peptide      -      +

Immunohistochemical analysis of paraffin-embedded human breast carcinoma tissue using Stathmin 1 (phospho-Ser24) antibody.



Western blot analysis of extracts from Jurkat cells untreated or treated with PMA (1ng/ml, 15mins), using Stathmin 1 (Ab-24) antibody (Line 1 and 2) and Stathmin 1 (phospho-Ser24) antibody (Line 3 and 4).

**For Research Use Only**