



Stathmin 1 (Phospho-Ser37) Antibody

E11-7232A

Catalog Number: E11-7232A

Amount: 100µg/100µl

Swiss-Prot No.: P16949

All Names: stathmin 1, LAG, LAP18, Leukemia-associated gene protein, Leukemia-associated phosphoprotein p18, Metablastin, Oncoprotein 18, Op18, PR22, Phosphoprotein p19, Pr22 protein, Prosolin, STN1, pp17, pp19, stathmin

All Sites: Human: Ser37; Mouse: Ser37; Rat: Ser37

Form of Antibody: Rabbit IgG in phosphate buffered saline (without Mg^{2+} and Ca^{2+}), pH 7.4, 150mM NaCl, 0.02% sodium azide and 50% glycerol.

Storage/Stability: Store at -20°C/1 year

Immunogen: The antiserum was produced against synthesized phosphopeptide derived from human Stathmin 1 around the phosphorylation site of serine 37 (P-L-S^P-P-P).

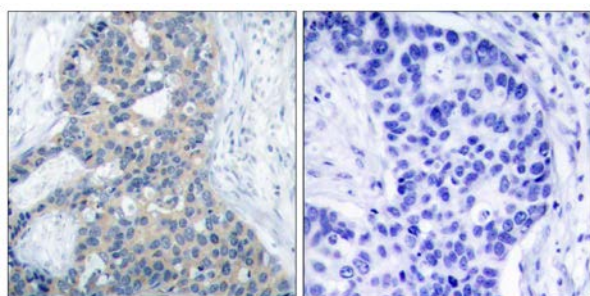
Purification: The antibody was affinity-purified from rabbit antiserum by affinity-chromatography using epitope-specific phosphopeptide. The antibody against non-phosphopeptide was removed by chromatography using non-phosphopeptide corresponding to the phosphorylation site.

Specificity/Sensitivity: Stathmin 1 (phospho-Ser37) antibody detects endogenous levels of Stathmin 1 only when phosphorylated at serine 37.

Reactivity: Human, Mouse, Rat

Applications: WB: 1:500~1:1000 IHC: 1:50~1:100
ELISA: 1:20000

References: Wang KK, et al. (1991) Biochem J 279(Pt 2): 537-544.
Sekimoto T, et al. (2004) EMBO J 23(9): 1934-1942.
Doye V, et al. (1992) Biochem J 287(Pt 2): 549-554.
Larsson N, et al. (1999) Mol Cell Biol 19(3): 2242-2250.

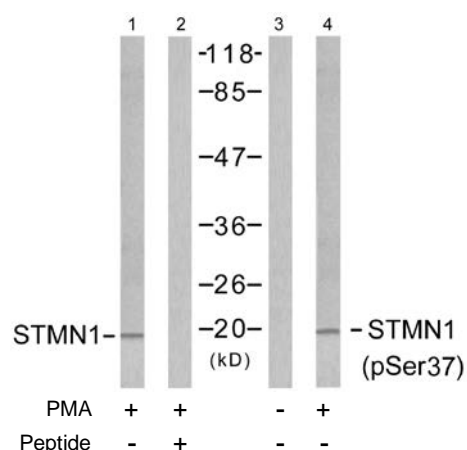


P-Peptide

-

+

Immunohistochemical analysis of paraffin-embedded human breast carcinoma tissue using Stathmin 1 (phospho-Ser37) antibody.



Western blot analysis of extracts from Jurkat cells untreated or treated with PMA (1ng/ml, 15min), using Stathmin 1 (Ab-37) antibody (Line 1 and 2) and Stathmin 1 (phospho-Ser37) antibody (Line 3 and 4).

For Research Use Only