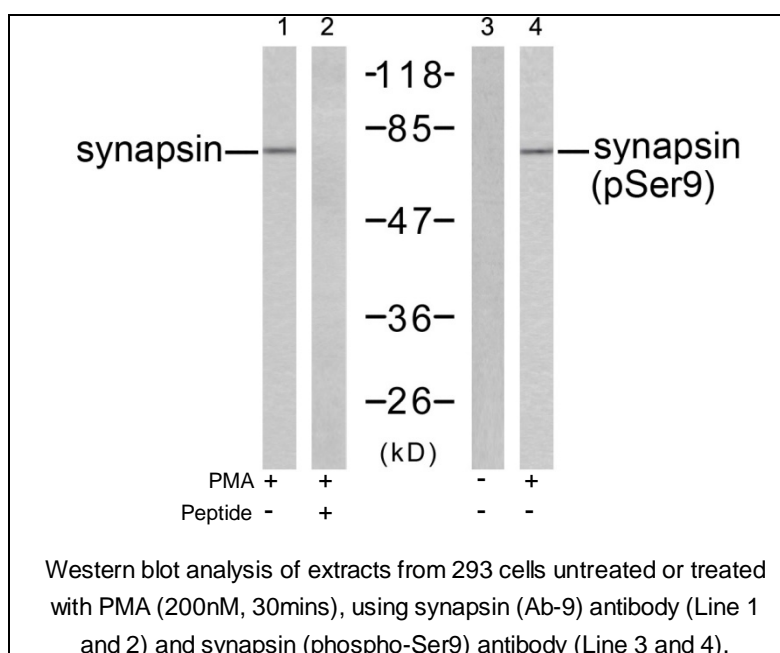




## synapsin (Phospho-Ser9) Antibody

E11-7233A

- Catalog Number:** E11-7233A
- Amount:** 100µg/100µl
- Swiss-Prot No.:** P17600
- All Names:** SYN1, Synapsin-1
- All Sites:** Human: Ser9; Mouse: Ser9; Rat: Ser9
- Form of Antibody:** Rabbit IgG in phosphate buffered saline (without  $Mg^{2+}$  and  $Ca^{2+}$ ), pH 7.4, 150mM NaCl, 0.02% sodium azide and 50% glycerol.
- Storage/Stability:** Store at -20 °C/1 year
- Immunogen:** The antiserum was produced against synthesized phosphopeptide derived from human synapsin around the phosphorylation site of serine 9 (R-L-S<sup>P</sup>-D-S).
- Purification:** The antibody was affinity-purified from rabbit antiserum by affinity-chromatography using epitope-specific phosphopeptide. The antibody against non-phosphopeptide was removed by chromatography using non-phosphopeptide corresponding to the phosphorylation site.
- Specificity/Sensitivity:** synapsin (phospho-Ser9) antibody detects endogenous levels of synapsin only when phosphorylated at serine 9. The antibody is expected to recognize phosphorylated serine 9 of all synapsin isoforms.
- Reactivity:** Human, Mouse, Rat
- Applications:** WB: 1:500~1:1000 ELISA: 1:20000
- References:** Diviya Sinha, et.al. (2005) Am J Physiol Renal Physiol; 288: F703-F713.  
Franco Onofri, et.al. (2000) J. Biol. Chem; 275: 29857.  
Dario Bonanomi, et.al. (2005) J. Neurosci; 25: 7299-7308.  
Hiroshi Tokumitsu, et.al. (2005) J. Biol. Chem; 280: 35108-35118.



**For Research Use Only**