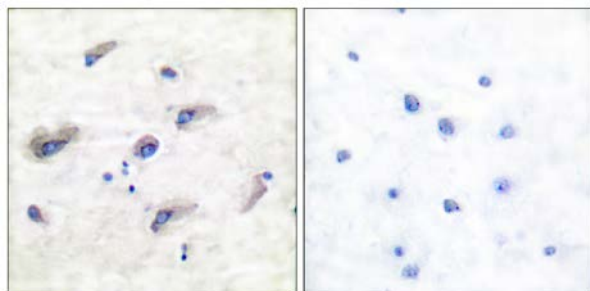




## Tau (Phospho-Ser356) Antibody

E11-7240A

- Catalog Number:** E11-7240A
- Amount:** 100µg/100µl
- Swiss-Prot No. :** P10636
- All Names:** MAPT, MTBT1, Microtubule-associated protein tau, Neurofibrillary tangle protein, PHF-tau, Paired helical filament-tau
- All Sites:** Human: Ser356; Mouse: Ser647; Rat: Ser666
- Form of Antibody:** Rabbit IgG in phosphate buffered saline (without  $Mg^{2+}$  and  $Ca^{2+}$ ), pH 7.4, 150mM NaCl, 0.02% sodium azide and 50% glycerol.
- Storage/Stability:** Store at -20°C/1 year
- Immunogen:** The antiserum was produced against synthesized phosphopeptide derived from human Tau around the phosphorylation site of serine 356 (I-G-S<sup>P</sup>-L-D).
- Purification:** The antibody was affinity-purified from rabbit antiserum by affinity-chromatography using epitope-specific phosphopeptide. The antibody against non-phosphopeptide was removed by chromatography using non-phosphopeptide corresponding to the phosphorylation site.
- Specificity/Sensitivity:** Tau (phospho-Ser356) antibody detects endogenous levels of Tau only when phosphorylated at serine 356.
- Reactivity:** Human, Mouse, Rat
- Applications:** WB: 1:500~1000      IHC: 1:50~100  
ELISA: 1:40000
- References:** Mario Binelli, Biol Reprod, Feb 2001; 64: 654.  
Jens Leipziger, Am J Physiol Renal Physiol, Nov 2000; 279: 919.  
Yuuki Kawamura, Eur. J. Biochem., May 2001; 268: 3036.  
Xiaoying Koh, Biophys. J., Mar 2006; 90: 1999 - 2014.

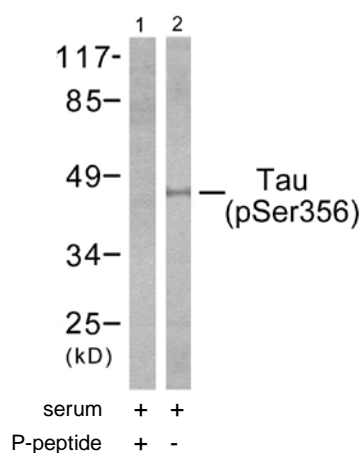


P-peptide

-

+

Immunohistochemical analysis of paraffin-embedded human brain tissue using Tau (phospho-Ser356) antibody.



Western blot analysis of extracts from 293 cells treated with serum (10%, 15min), using Tau (phospho-Ser356) antibody (Line 1 and 2).

**For Research Use Only**