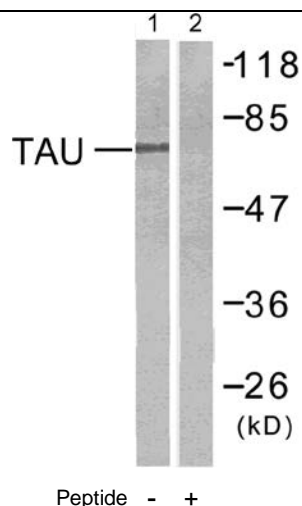




Tau (Ab-356) Antibody

E11-7240B

- Catalog Number:** E11-7240B
- Amount:** 100µg/100µl
- Swiss-Prot No. :** P10636
- All Names:** MAPT, MTBT1, Microtubule-associated protein tau, Neurofibrillary tangle protein, PHF-tau, Paired helical filament-tau
- Form of Antibody:** Rabbit IgG in phosphate buffered saline (without Mg²⁺ and Ca²⁺), pH 7.4, 150mM NaCl, 0.02% sodium azide and 50% glycerol.
- Storage/Stability:** Store at -20°C/1 year
- Immunogen:** The antiserum was produced against synthesized non-phosphopeptide derived from human Tau around the phosphorylation site of serine 356 (I-G-S^P-L-D)
- Purification:** The antibody was affinity-purified from rabbit antiserum by affinity-chromatography using epitope-specific immunogen.
- Specificity/Sensitivity:** Tau (Ab-356) antibody detects endogenous levels of total Tau protein.
- Reactivity:** Human, Mouse, Rat
- Applications:** WB: 1:500~1:1000 ELISA: 1:5000
- References:** Takeo Minaguchi, et al. (2006) Cancer Res. 66: 11677-11682.
Damian B. S. Yap, et al. (2004) Cancer Res. 64: 4749-4754.
Sook Chong Choi, et al. (1974) Cancer Res. 34: 2351-2357.
Steven D. Leach, et al. (1998) Cancer Res. 58: 3231-3236.



Western blot analysis of extracts from mouse brain cells, using Tau (Ab-356) antibody (#B7240, Line1 and 2).

For Research Use Only