



## TAS2R10 Antibody

**E11-750G****Catalog Number:** E11-750G**Concentration:** 1mg/ml, 100ug/100uL**Swiss-Prot No.:** Q9NYW0**Other Names:** Taste receptor type 2 member 10; T2R10;  
Taste receptor family B member 2; TRB2; TAS2R10**Storage/Stability:** Store at -20°C/1 year**Form of Antibody:** Rabbit IgG in phosphate buffered saline (without Mg<sup>2+</sup> and Ca<sup>2+</sup>), pH 7.4, 150mM NaCl, 0.02% sodium azide and 50% glycerol.**Immunogen:** The antiserum was produced against synthesized peptide derived from internal of human TAS2R10.**Purification:** The antibody was affinity-purified from

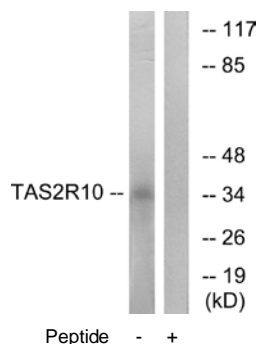
rabbit antiserum by affinity-chromatography using epitope-specific immunogen.

**Specificity:** TAS2R10 antibody detects endogenous levels of total TAS2R10 protein.**Reactivity:** Human**Applications:** WB: 1:500~1:1000 IF: 1:100~1:500  
ELISA: 1:10000**References:**

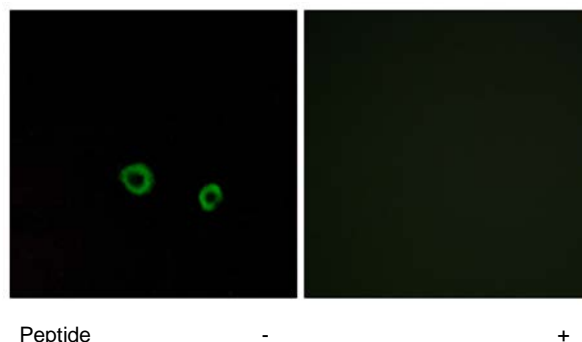
Adler E., Cell 100:693-702(2000).

Fischer A., Mol. Biol. Evol. 22:432-436(2005).

The MGC Project Team; Genome Res. 14:2121-2127(2004).



Western blot analysis of extracts from LOVO cells, using TAS2R10 antibody.



Immunofluorescence analysis of MCF-7 cells, using TAS2R10 antibody.

**For Research Use Only**