



Caspase 8 (Phospho-Tyr380) Antibody

E11-8011A

Catalog Number: E11-8011A

Concentration: 1mg/ml

Swiss-Prot No.: Q14790

Other Names: Apoptotic cysteine protease; Apoptotic protease Mch-5; CAP4; Caspase-8 precursor; EC 3.4.22.-; EC 3.4.22.61; FADD-homologous ICE/CED-3- like protease; FADD-like ICE; FLICE; ICE-like apoptotic protease 5; ICE8; MACH; MCH5; MORT1-associated CED-3 homolog

All Sites: Human: Tyr380

Storage/Stability: Store at -20 °C/1 year

Form of Antibody: Rabbit IgG in phosphate buffered saline (without Mg^{2+} and Ca^{2+}), pH 7.4, 150mM NaCl, 0.02% sodium azide and 50% glycerol.

Immunogen: The antiserum was produced against synthesized phosphopeptide derived from human Caspase 8 around the phosphorylation site of tyrosine

380 (Q-P-Y^P-L-E).

Purification: The antibody was affinity-purified from rabbit antiserum by affinity-chromatography using epitope-specific phosphopeptide. The antibody against non-phosphopeptide was removed by chromatography using non-phosphopeptide corresponding to the phosphorylation site.

Specificity: Caspase 8 (Phospho-Tyr380) antibody detects endogenous levels of Caspase 8 only when phosphorylated at tyrosine 380.

Reactivity: Human (Identities = 100%, Positives = 100%)

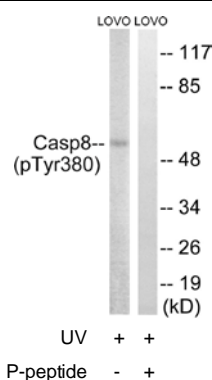
Applications: WB: 1:500~1:1000 ELISA: 1:10000

References:

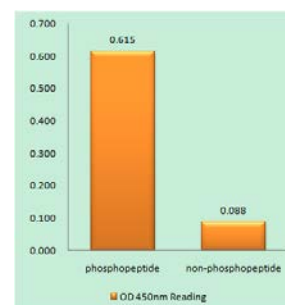
Boldin M.P., Cell 85:803-815(1996).

Muzio M., Cell 85:817-827(1996).

Fernandes-Alnemri T., Proc. Natl. Acad. Sci. U.S.A. 93:7464-7469(1996).



Western blot analysis of extracts from LOVO cells, treated with UV (15mins), using Caspase 8 (Phospho-Tyr380) antibody.



Caspase 8 (Phospho-Tyr380) antibody reacts with epitope-specific phosphopeptide and corresponding non-phosphopeptide. The absorbance readings at 450 nM are shown in the ELISA figure.

For Research Use Only