



## CDC25A (Phospho-Ser178) Antibody

E11-8017A

**Catalog Number:** E11-8017A

**Concentration:** 1mg/ml

**Swiss-Prot No.:** P30304

**Other Names:** CDC25M3; Dual specificity phosphatase Cdc25A; EC 3.1.3.48; M-phase inducer phosphatase 1; MIP1

**All Sites:** Human: Ser178; Mouse: Ser171; Rat: Ser179

**Storage/Stability:** Store at -20 °C/1 year

**Form of Antibody:** Rabbit IgG in phosphate buffered saline (without  $Mg^{2+}$  and  $Ca^{2+}$ ), pH 7.4, 150mM NaCl, 0.02% sodium azide and 50% glycerol.

**Immunogen:** The antiserum was produced against synthesized phosphopeptide derived from human CDC25A around the phosphorylation site of serine 178 (Q-N-S<sup>P</sup>-A-P).

**Purification:** The antibody was affinity-purified from rabbit antiserum by affinity-chromatography using

epitope-specific phosphopeptide. The antibody against non-phosphopeptide was removed by chromatography using non-phosphopeptide corresponding to the phosphorylation site.

**Specificity:** CDC25A (Phospho-Ser178) antibody detects endogenous levels of CDC25A only when phosphorylated at serine 178.

**Reactivity:** Human (Identities = 100%, Positives = 100%);  
Mouse (Identities = 92%, Positives = 92%);  
Rat (Identities = 92%, Positives = 92%)

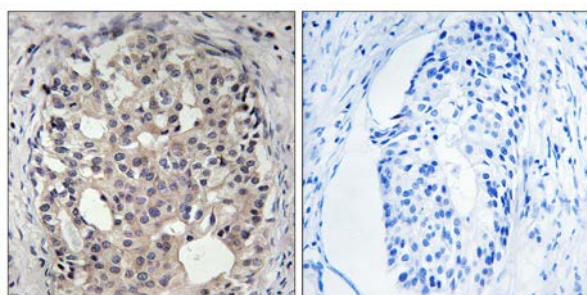
**Applications:** WB: 1:500~1:1000 IHC: 1:50~1:100  
ELISA: 1:10000

### References:

Galaktionov K.I., Cell 67:1181-1194(1991).

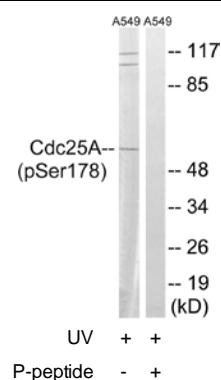
Wegener S., Eur. J. Cell Biol. 79:810-815(2000).

Zhao H., Proc. Natl. Acad. Sci. U.S.A. 99-14795-14800(2002).



P-peptide - +

Immunohistochemistry analysis of paraffin-embedded human breast carcinoma tissue using CDC25A (Phospho-Ser178) antibody.



Western blot analysis of extracts from A549 cells, treated with UV (15mins), using CDC25A (Phospho-Ser178) antibody.

**For Research Use Only**