



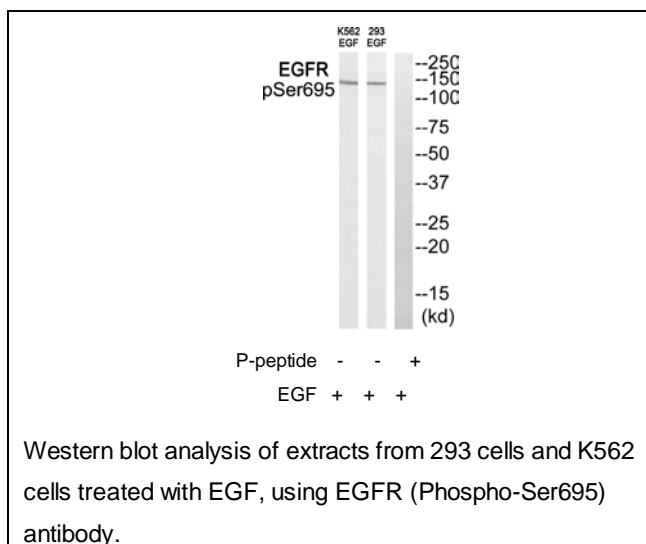
EGFR (Phospho-Ser695) Antibody

E11-8023A**Catalog Number:** E11-8023A**Concentration:** 1mg/ml**Swiss-Prot No.:** P00533**Other Names:** Epidermal growth factor receptor;
Proto-oncogene c-ErbB-1; Receptor tyrosine-protein
kinase erbB- ; EGFR; ERBB1**All Sites:** Human: Ser695; Mouse: Ser697; Rat: Ser696**Storage/Stability:** Store at -20 °C/1 year**Form of Antibody:** Rabbit IgG in phosphate buffered
saline (without Mg^{2+} and Ca^{2+}), pH 7.4, 150mM NaCl,
0.02% sodium azide and 50% glycerol.**Immunogen:** The antiserum was produced against
synthesized phosphopeptide derived from human EGFR
around the phosphorylation site of serine 695
(T-P-S^P-G-E).**Purification:** The antibody was affinity-purified fromrabbit antiserum by affinity-chromatography using
epitope-specific phosphopeptide. The antibody against
non-phosphopeptide was removed by chromatography
using non-phosphopeptide corresponding to the
phosphorylation site.**Specificity:** EGFR (Phospho-Ser695) antibody detects
endogenous levels of EGFR only when phosphorylated at
serine 695.**Reactivity:** Human (Identities = 100%, Positives = 100%);
Mouse (Identities = 100%, Positives = 100%);
Rat (Identities = 100%, Positives = 100%)**Applications:** WB: 1:500~1:1000 ELISA: 1:40000**References:**

Ullrich A., Nature 309:418-425(1984).

Ilekis J.V., Mol. Reprod. Dev. 41:149-156(1995).

Reiter J.L., Nucleic Acids Res. 24:4050-4056(1996).

**For Research Use Only**