



EGFR (Phospho-Ser1026) Antibody

E11-8024A

Catalog Number: E11-8024A

Concentration: 1mg/ml

Swiss-Prot No.: P00533

Other Names: EC 2.7.10.1; epidermal growth factor receptor (erythroblastic leukemia viral (v-erb-b) oncogene homolog, avian); Epidermal growth factor receptor precursor; ERBB1; kinase EGFR; Receptor protein-tyrosine kinase ErbB-1

All Sites: Human: Ser1026; Mouse: Ser1028; Rat: Ser1027

Storage/Stability: Store at -20 °C/1 year

Form of Antibody: Rabbit IgG in phosphate buffered saline (without Mg^{2+} and Ca^{2+}), pH 7.4, 150mM NaCl, 0.02% sodium azide and 50% glycerol.

Immunogen: The antiserum was produced against synthesized phosphopeptide derived from human EGFR around the phosphorylation site of serine 1026 (F-S-S^P-P-S).

Purification: The antibody was affinity-purified from rabbit antiserum by affinity-chromatography using epitope-specific phosphopeptide. The antibody against non-phosphopeptide was removed by chromatography using non-phosphopeptide corresponding to the phosphorylation site.

Specificity: EGFR (Phospho-Ser1026) antibody detects endogenous levels of EGFR only when phosphorylated at serine 1026.

Reactivity: Human (Identities = 100%, Positives = 100%);
Mouse (Identities = 92%, Positives = 100%);
Rat (Identities = 92%, Positives = 100%)

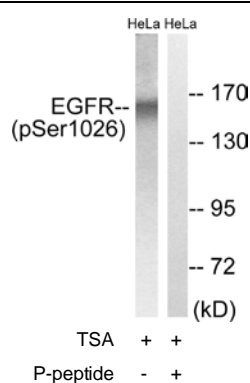
Applications: WB: 1:500~1:1000 IHC: 1:50~1:100
ELISA: 1:10000

References:

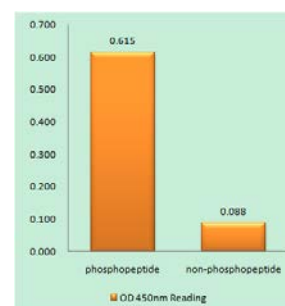
Ullrich A., Nature 309:418-425(1984).

Ilekis J.V., Mol. Reprod. Dev. 41:149-156(1995).

Reiter J.L., Nucleic Acids Res. 24:4050-4056(1996).



Western blot analysis of extracts from HeLa cells, treated with TSA (400nM, 24hours), using EGFR (Phospho-Ser1026) antibody.



EGFR (Phospho-Ser1026) antibody reacts with epitope-specific phosphopeptide and corresponding non-phosphopeptide. The absorbance readings at 450 nM are shown in the ELISA figure.

For Research Use Only