



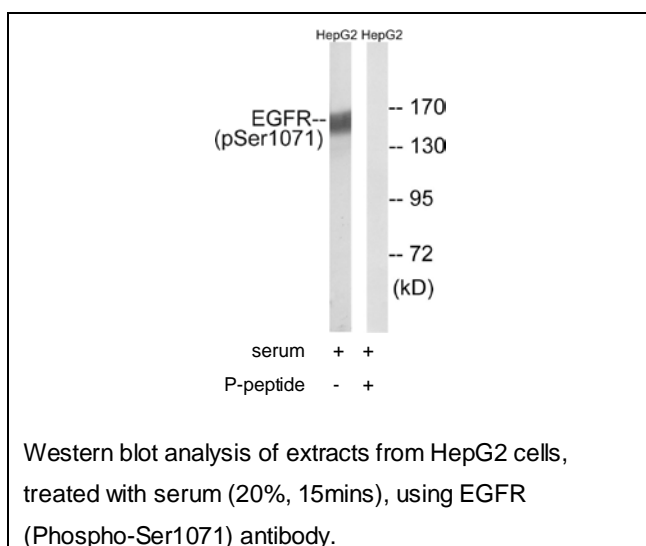
## EGFR (Phospho-Ser1071) Antibody

**E11-8025A****Catalog Number:** E11-8025A**Concentration:** 1mg/ml**Swiss-Prot No.:** P00533**Other Names:** EC 2.7.10.1; epidermal growth factor receptor (erythroblastic leukemia viral (v-erb-b) oncogene homolog, avian); Epidermal growth factor receptor precursor; ERBB1; kinase EGFR; Receptor protein-tyrosine kinase ErbB-1**All Sites:** Human: Ser1071; Mouse: Ser1071; Rat: Ser1071**Storage/Stability:** Store at -20°C/1 year**Form of Antibody:** Rabbit IgG in phosphate buffered saline (without  $Mg^{2+}$  and  $Ca^{2+}$ ), pH 7.4, 150mM NaCl, 0.02% sodium azide and 50% glycerol.**Immunogen:** The antiserum was produced against synthesized phosphopeptide derived from human EGFR around the phosphorylation site of serine 1071 (Y-S-S<sup>P</sup>-D-P).**Purification:** The antibody was affinity-purified from rabbit antiserum by affinity-chromatography using epitope-specific phosphopeptide. The antibody against non-phosphopeptide was removed by chromatography using non-phosphopeptide corresponding to the phosphorylation site.**Specificity:** EGFR (Phospho-Ser1071) antibody detects endogenous levels of EGFR only when phosphorylated at serine 1071.**Reactivity:** Human (Identities = 100%, Positives = 100%);  
Mouse (Identities = 92%, Positives = 100%);  
Rat (Identities = 85%, Positives = 85%)**Applications:** WB: 1:500~1:1000 ELISA: 1:5000**References:**

Ullrich A., Nature 309:418-425(1984).

Ilekis J.V., Mol. Reprod. Dev. 41:149-156(1995).

Reiter J.L., Nucleic Acids Res. 24:4050-4056(1996).

**For Research Use Only**