



Ezrin (Phospho-Tyr146) Antibody

E11-8030A**Catalog Number:** E11-8030A**Concentration:** 1mg/ml**Swiss-Prot No.:** P15311**Other Names:** Cytovillin; EZRI; p81; VIL2; Villin 2**All Sites:** Human: Tyr146; Mouse: Tyr146; Rat: Tyr146**Storage/Stability:** Store at -20 °C/1 ye**Form of Antibody:** Rabbit IgG in phosphate buffered saline (without Mg^{2+} and Ca^{2+}), pH 7.4, 150mM NaCl, 0.02% sodium azide and 50% glycerol.**Immunogen:** The antiserum was produced against synthesized phosphopeptide derived from human Ezrin around the phosphorylation site of tyrosine 146 (S-G-Y^P-L-S).**Purification:** The antibody was affinity-purified from rabbit antiserum by affinity-chromatography using

epitope-specific phosphopeptide. The antibody against non-phosphopeptide was removed by chromatography using non-phosphopeptide corresponding to the phosphorylation site.

Specificity: Ezrin (Phospho-Tyr146) antibody detects endogenous levels of Ezrin only when phosphorylated at tyrosine 146.**Reactivity:** Human (Identities = 100%, Positives = 100%);

Mouse (Identities = 92%, Positives = 100%);

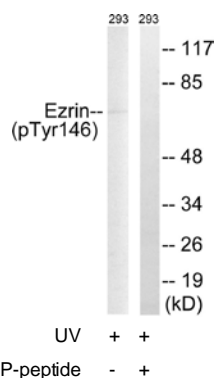
Rat (Identities = 92%, Positives = 100%)

Applications: WB: 1:500~1:1000 ELISA: 1:40000**References:**

Gould K.L., EMBO J. 8:4133-4142(1989).

Bechtel S., BMC Genomics 8:399-399(2007).

Mungall A.J., Nature 425:805-811(2003).



Western blot analysis of extracts from 293 cells, treated with UV (15mins), using Ezrin (Phospho-Tyr146) antibody.

For Research Use Only