



HSF1 (Phospho-Thr142) Antibody

E11-8040A

Catalog Number: E11-8040A

Concentration: 1mg/ml

Swiss-Prot No.: Q00613

Other Names: Heat shock factor protein 1; Heat shock transcription factor 1; HSF 1; HSTF 1; HSTF1

All Sites: Human: Thr142; Mouse: Thr142

Storage/Stability: Store at -20 °C/year

Form of Antibody: Rabbit IgG in phosphate buffered saline (without Mg^{2+} and Ca^{2+}), pH 7.4, 150mM NaCl, 0.02% sodium azide and 50% glycerol.

Immunogen: The antiserum was produced against synthesized phosphopeptide derived from human HSF1 around the phosphorylation site of threonine 142 (L-L-T^P-D-V).

Purification: The antibody was affinity-purified from rabbit antiserum by affinity-chromatography using epitope-specific phosphopeptide. The antibody against

non-phosphopeptide was removed by chromatography using non-phosphopeptide corresponding to the phosphorylation site.

Specificity: HSF1 (Phospho-Thr142) antibody detects endogenous levels of HSF1 only when phosphorylated at threonine 142.

Reactivity: Human (Identities = 100%, Positives = 100%); Mouse (Identities = 92%, Positives = 100%)

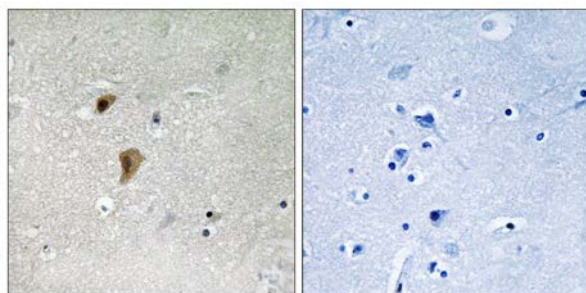
Applications: IHC: 1:50~1:100 ELISA: 1:20000

References:

Rabindran S.K., Proc. Natl. Acad. Sci. U.S.A. 88:6906-6910(1991).

The MGC Project Team; Genome Res. 14:2121-2127(2004).

Schuetz T.J.,Proc. Natl. Acad. Sci. U.S.A. 88:6911-6915(1991).

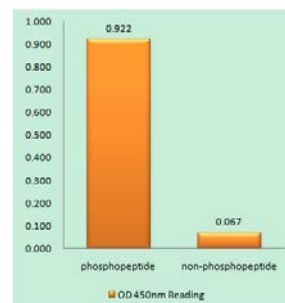


P-peptide

-

+

Immunohistochemistry analysis of paraffin-embedded human brain tissue using HSF1 (Phospho-Thr142) antibody.



HSF1 (Phospho-Thr142) antibody reacts with epitope-specific phosphopeptide and corresponding non-phosphopeptide. The absorbance readings at 450 nM are shown in the ELISA figure.

For Research Use Only