



p53 (Phospho-Thr387) Antibody

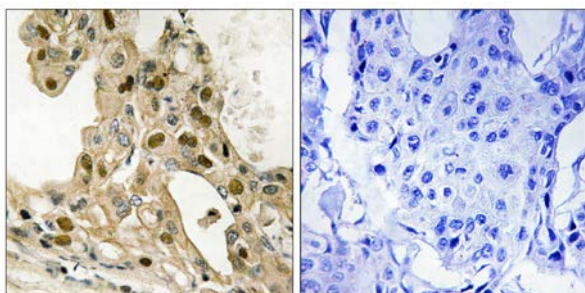
E11-8051A

Catalog Number: E11-8051A**Concentration:** 1mg/ml**Swiss-Prot No.:** P04637**Other Names:** Antigen NY-CO-13; Cellular tumor antigen p53; Phosphoprotein p53; TP53; tumor protein p53; Tumor suppressor p53**All Sites:** Human: Thr387**Storage/Stability:** Store at -20 °C/1 year**Form of Antibody:** Rabbit IgG in phosphate buffered saline (without Mg^{2+} and Ca^{2+}), pH 7.4, 150mM NaCl, 0.02% sodium azide and 50% glycerol.**Immunogen:** The antiserum was produced against synthesized phosphopeptide derived from human p53 around the phosphorylation site of threonine 387 (F-K-T^P-E-G).**Purification:** The antibody was affinity-purified from rabbit antiserum by affinity-chromatography using epitope-specific phosphopeptide. The antibody against non-phosphopeptide was removed by chromatography using non-phosphopeptide corresponding to the phosphorylation site.**Specificity:** p53 (Phospho-Thr387) antibody detects endogenous levels of p53 only when phosphorylated at threonine 387.**Reactivity:** Human (Identities = 100%, Positives = 100%)**Applications:** IHC: 1:50~1:100 ELISA: 1:1000**References:**

Zakut-Houri R., EMBO J. 4:1251-1255(1985).

Lamb P., Mol. Cell. Biol. 6:1379-1385(1986).

Harlow E., Mol. Cell. Biol. 5:1601-1610(1985).

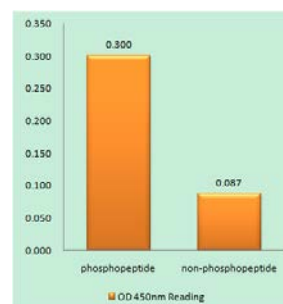


P-peptide

-

+

Immunohistochemistry analysis of paraffin-embedded human breast carcinoma tissue using p53 (Phospho-Thr387) antibody.



p53 (Phospho-Thr387) antibody reacts with epitope-specific phosphopeptide and corresponding non-phosphopeptide. The absorbance readings at 450 nM are shown in the ELISA figure.

For Research Use Only