



## SHP-1 (Phospho-Tyr564) Antibody

E11-8061A

**Catalog Number:** E11-8061A

**Concentration:** 1mg/ml

**Swiss-Prot No.:** P29350

**Other Names:** 70Z-SHP; EC 3.1.3.48; HCP; HCPH; Hematopoietic cell protein-tyrosine phosphatase; Protein-tyrosine phosphatase 1C; Protein-tyrosine phosphatase SHP-1; Protein-tyrosine phosphatase, non-receptor type 6; PTN6; PTP-1C; PTP1C; PTPN6; SH-PTP1; SHP1

**All Sites:** Human: Tyr564

**Storage/Stability:** Store at -20 °C/1 year

**Form of Antibody:** Rabbit IgG in phosphate buffered saline (without  $Mg^{2+}$  and  $Ca^{2+}$ ), pH 7.4, 150mM NaCl, 0.02% sodium azide and 50% glycerol.

**Immunogen:** The antiserum was produced against synthesized phosphopeptide derived from human SHP-1 around the phosphorylation site of tyrosine 564

(D-V-Y<sup>P</sup>-E-N).

**Purification:** The antibody was affinity-purified from rabbit antiserum by affinity-chromatography using epitope-specific phosphopeptide. The antibody against non-phosphopeptide was removed by chromatography using non-phosphopeptide corresponding to the phosphorylation site.

**Specificity:** SHP-1 (Phospho-Tyr564) antibody detects endogenous levels of SHP-1 only when phosphorylated at tyrosine 564.

**Reactivity:** Human (Identities = 100%, Positives = 100%)

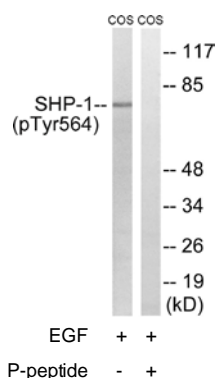
**Applications:** WB: 1:500~1:1000 ELISA: 1:10000

### References:

Yi T., Mol. Cell. Biol. 12:836-846(1992).

Shen S.H., Nature 352:736-739(1991).

Plutzky J., Proc. Natl. Acad. Sci. U.S.A. 89:1123-1127(1992).



Western blot analysis of extracts from COS7 cells, treated with EGF (200ng/ml, 30mins), using SHP-1 (Phospho-Tyr564) antibody.

**For Research Use Only**