



A-RAF (Phospho-Ser299) Antibody

E11-8078A

Catalog Number: E11-8078A

Concentration: 1mg/ml

Swiss-Prot No.: P10398

Other Names: A-Raf proto-oncogene

serine/threonine-protein kinase; A-raf-1; Proto-oncogene Pks; ARAF; ARAF1; PKS; PKS2

All Sites: Human: Ser299; Mouse: Ser297; Rat: Ser297

Storage/Stability: Store at -20°C/1 year

Form of Antibody: Rabbit IgG in phosphate buffered saline (without Mg^{2+} and Ca^{2+}), pH 7.4, 150mM NaCl, 0.02% sodium azide and 50% glycerol.

Immunogen: The antiserum was produced against synthesized phosphopeptide derived from human A-RAF around the phosphorylation site of serine 299 (R-D-S^P-G-Y).

Purification: The antibody was affinity-purified from

rabbit antiserum by affinity-chromatography using epitope-specific phosphopeptide. The antibody against non-phosphopeptide was removed by chromatography using non-phosphopeptide corresponding to the phosphorylation site.

Specificity: A-RAF (Phospho-Ser299) antibody detects endogenous levels of A-RAF only when phosphorylated at serine 299.

Reactivity: Human, Mouse, Rat

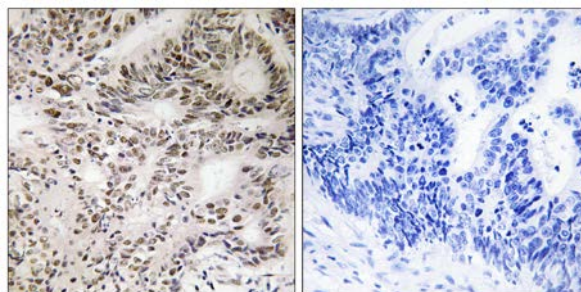
Applications: IHC: 1:50~1:100 ELISA: 1:1000

References:

Beck T.W., Nucleic Acids Res. 15:595-609(1987).

Lee J.-E., Genomics 20:43-55(1994).

Kalnina N., Submitted (MAY-2003) to the EMBL/GenBank/DDBJ databases.



P-peptide

-

+

Immunohistochemistry analysis of paraffin-embedded human colon carcinoma tissue, using A-RAF (Phospho-Ser299) antibody.

For Research Use Only