



## AXL (Phospho-Tyr691) Antibody

E11-8079A

**Catalog Number:** E11-8079A

**Concentration:** 1mg/ml

**Swiss-Prot No.:** P30530

**Other Names:** Adhesion-related kinase; ARK; AXL oncogene; EC 2.7.10.1; kinase AXL; Tyrosine-protein kinase receptor UFO precursor; UFO

**All Sites:** Human: Tyr691; Mouse: Tyr692; Rat: Tyr692

**Storage/Stability:** Store at -20 °C/1 year

**Form of Antibody:** Rabbit IgG in phosphate buffered saline (without  $Mg^{2+}$  and  $Ca^{2+}$ ), pH 7.4, 150mM NaCl, 0.02% sodium azide and 50% glycerol.

**Immunogen:** The antiserum was produced against synthesized phosphopeptide derived from human AXL around the phosphorylation site of tyrosine 691 (K-I-Y<sup>P</sup>-N-G).

**Purification:** The antibody was affinity-purified from rabbit antiserum by affinity-chromatography using

epitope-specific phosphopeptide. The antibody against non-phosphopeptide was removed by chromatography using non-phosphopeptide corresponding to the phosphorylation site.

**Specificity:** AXL (Phospho-Tyr691) antibody detects endogenous levels of AXL only when phosphorylated at tyrosine 691.

**Reactivity:** Human (Identities = 100%, Positives = 100%);  
Mouse (Identities = 100%, Positives = 100%);  
Rat (Identities = 100%, Positives = 100%)

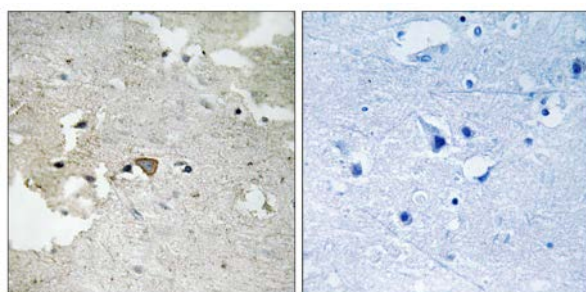
**Applications:** WB: 1:500~1:1000 IHC: 1:50~1:100  
ELISA: 1:20000

### References:

Partanen J., Proc. Natl. Acad. Sci. U.S.A. 87:8913-8917(1990).

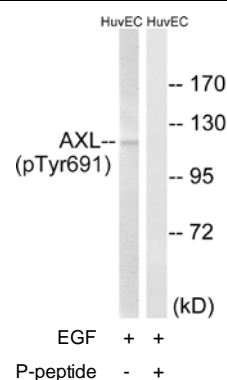
Janssen J.W.G., Oncogene 6:2113-2120(1991).

O'Bryan J.P., Mol. Cell. Biol. 11:5016-5031(1991).



P-peptide                      -                      +

Immunohistochemistry analysis of paraffin-embedded human brain tissue using AXL (Phospho-Tyr691) antibody.



Western blot analysis of extracts from HUVEC cells, treated with EGF (200ng/ml, 15mins), using AXL (Phospho-Tyr691) antibody.

**For Research Use Only**