



## B-RAF (Phospho-Ser446) Antibody

E11-8082A

**Catalog Number:** E11-8082A

**Concentration:** 1mg/ml

**Swiss-Prot No.:** P15056

**Other Names:** B-RAF; B-RAF proto-oncogene serine/threonine-protein kinase; B-Raf proto-oncogene serine/threonine-protein kinase; BRAF; BRAF1; c-RMIL; EC 2.7.1.37; EC 2.7.11.1; kinase B-Raf; p94; RAFB1; RMIL; RMIL serine/threonine-protein kinase; v-Raf murine sarcoma viral oncogene homolog B1

**All Sites:** Human: Ser446; Mouse: Ser483

**Storage/Stability:** Store at -20 °C/1 year

**Form of Antibody:** Rabbit IgG in phosphate buffered saline (without  $Mg^{2+}$  and  $Ca^{2+}$ ), pH 7.4, 150mM NaCl, 0.02% sodium azide and 50% glycerol.

**Immunogen:** The antiserum was produced against synthesized phosphopeptide derived from human B-RAF around the phosphorylation site of serine 446 (R-D-S<sup>P</sup>-S-D).

**Purification:** The antibody was affinity-purified from rabbit antiserum by affinity-chromatography using epitope-specific phosphopeptide. The antibody against non-phosphopeptide was removed by chromatography using non-phosphopeptide corresponding to the phosphorylation site.

**Specificity:** B-RAF (Phospho-Ser446) antibody detects endogenous levels of B-RAF only when phosphorylated at serine 446.

**Reactivity:** Human (Identities = 100%, Positives = 100%);  
Mouse (Identities = 100%, Positives = 100%)

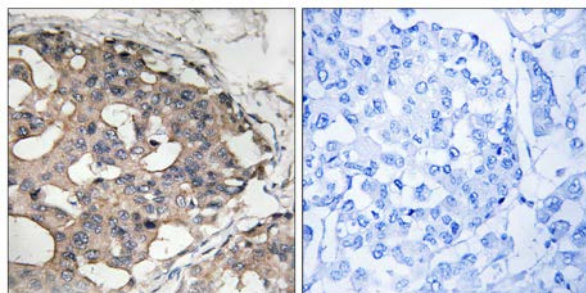
**Applications:** WB: 1:500~1:1000 IHC: 1:50~1:100  
ELISA: 1:10000

### References:

Stephens R.M., Mol. Cell. Biol. 12:3733-3742(1992).

Albert S., Submitted (JAN-2004) to the EMBL/GenBank/DBJ databases.

Hillier L.W., Nature 424:157-164(2003).

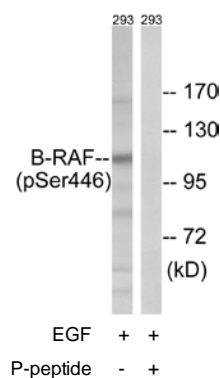


P-peptide

-

+

Immunohistochemistry analysis of paraffin-embedded human brain tissue using B-RAF (Phospho-Ser446) antibody.



Western blot analysis of extracts from 293 cells, treated with EGF (200ng/ml, 30mins), using B-RAF (Phospho-Ser446) antibody.

**For Research Use Only**