



## EPHA3/4/5(Phospho-Tyr779/833) Antibody

E11-8095A

**Catalog Number:** E11-8095A

**Concentration:** 1mg/ml

**Swiss-Prot No.:** P29320/54764/54756

**Other Names:** EC 2.7.10.1; EPA3; ephrin type-A receptor 3; ETK; ETK1; HEK; HEK4; kinase EphA3; MEK4; REK4; TYRO-4; TYRO4; tyrosine-protein kinase receptor ETK1; tyrosine-protein kinase receptor REK4

**All Sites:** Human: Tyr779/779/833; Mouse:

Tyr779/779/672; Rat: Tyr780/-/835

**Storage/Stability:** Store at -20 °C/1 year

**Form of Antibody:** Rabbit IgG in phosphate buffered saline (without  $Mg^{2+}$  and  $Ca^{2+}$ ), pH 7.4, 150mM NaCl, 0.02% sodium azide and 50% glycerol.

**Immunogen:** The antiserum was produced against synthesized phosphopeptide derived from human EPHA3/4/5 around the phosphorylation site of tyrosine 779 (A-A-Y<sup>P</sup>-T-T).

**Purification:** The antibody was affinity-purified from

rabbit antiserum by affinity-chromatography using epitope-specific phosphopeptide. The antibody against non-phosphopeptide was removed by chromatography using non-phosphopeptide corresponding to the phosphorylation site.

**Specificity:** EPHA3/4/5 (Phospho-Tyr779/833) antibody detects endogenous levels of EPHA3/4/5 only when phosphorylated at tyrosine 779.

**Reactivity:** Human (Identities = 100%, Positives = 100%);  
Mouse (Identities = 100%, Positives = 100%);  
Rat (Identities = 100%, Positives = 100%)

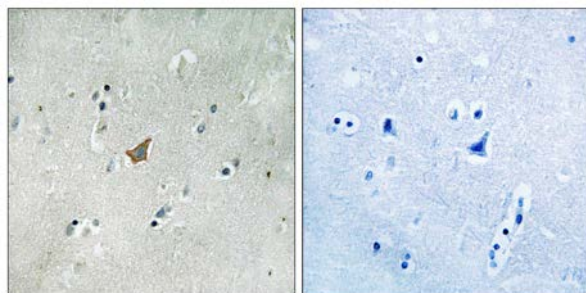
**Applications:** IHC: 1:50~1:100 ELISA: 1:10000

### References:

Wicks I.P., Proc. Natl. Acad. Sci. U.S.A. 89:1611-1615(1992).

Chiari R., Cancer Res. 60:4855-4863(2000).

Boyd A.W., J. Biol. Chem. 267:3262-3267(1992).

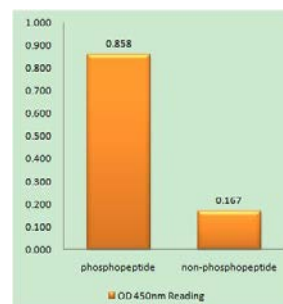


P-peptide

-

+

Immunohistochemistry analysis of paraffin-embedded human brain tissue using EPHA3/4/5 (Phospho-Tyr779/833) antibody.



EPHA3/4/5 (Phospho-Tyr779/833) antibody reacts with epitope-specific phosphopeptide and corresponding non-phosphopeptide. The absorbance readings at 450 nm are shown in the ELISA figure.

**For Research Use Only**