



FER (Phospho-Tyr402) Antibody

E11-8100A

Catalog Number: E11-8100A

Concentration: 1mg/ml

Swiss-Prot No.: P16591

Other Names: c-FER; EC 2.7.10.2; FER; FERT2; kinase Fer; p94-FER; TYK3

All Sites: Human: Tyr402; Mouse: Tyr402

Storage/Stability: Store at -20 °C/1 year

Form of Antibody: Rabbit IgG in phosphate buffered saline (without Mg^{2+} and Ca^{2+}), pH 7.4, 150mM NaCl, 0.02% sodium azide and 50% glycerol.

Immunogen: The antiserum was produced against synthesized phosphopeptide derived from human FER around the phosphorylation site of tyrosine 402 (V-N-Y^P-E-E).

Purification: The antibody was affinity-purified from rabbit antiserum by affinity-chromatography using

epitope-specific phosphopeptide. The antibody against non-phosphopeptide was removed by chromatography using non-phosphopeptide corresponding to the phosphorylation site.

Specificity: FER (Phospho-Tyr402) antibody detects endogenous levels of FER only when phosphorylated at tyrosine 402.

Reactivity: Human (Identities = 100%, Positives = 100%);
Mouse (Identities = 100%, Positives = 100%)

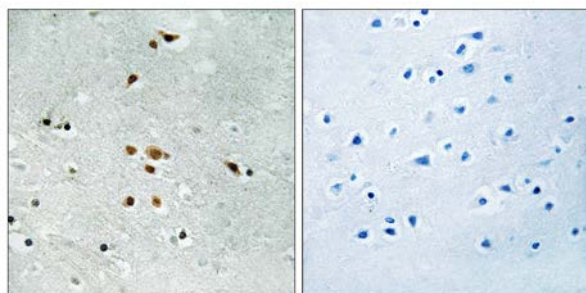
Applications: WB: 1:500~1:1000 IHC: 1:50~1:100
ELISA: 1:20000

References:

Hao Q.-L., Mol. Cell. Biol. 9:1587-1593(1989).

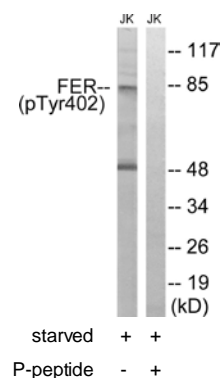
Lee S.-T., Oncogene 8:3403-3410(1993).

Krolewski J.J., Oncogene 5:277-282(1990).



P-peptide - +

Immunohistochemistry analysis of paraffin-embedded human brain tissue using FER (Phospho-Tyr402) antibody.



Western blot analysis of extracts from Jurkat cells, treated with starved (24hours), using FER (Phospho-Tyr402) antibody.

For Research Use Only