



FLT3 (Phospho-Tyr969) Antibody

E11-8108A

Catalog Number: E11-8108A

Concentration: 1mg/ml

Swiss-Prot No.: P36888

Other Names: CD135; EC 2.7.10.1; fetal liver kinase 2; FL cytokine receptor; FLK-2; FLT-3; FLT3; fms-related tyrosine kinase 3; kinase Flt3; stem cell tyrosine kinase 1; STK-1; STK1

All Sites: Human: Tyr969

Storage/Stability: Store at -20 °C/1 year

Form of Antibody: Rabbit IgG in phosphate buffered saline (without Mg^{2+} and Ca^{2+}), pH 7.4, 150mM NaCl, 0.02% sodium azide and 50% glycerol.

Immunogen: The antiserum was produced against synthesized phosphopeptide derived from human FLT3 around the phosphorylation site of tyrosine 696 (H-T-Y^P-Q-N).

Purification: The antibody was affinity-purified from rabbit antiserum by affinity-chromatography using epitope-specific phosphopeptide. The antibody against non-phosphopeptide was removed by chromatography using non-phosphopeptide corresponding to the phosphorylation site.

Specificity: FLT3 (Phospho-Tyr969) antibody detects endogenous levels of FLT3 only when phosphorylated at tyrosine 696.

Reactivity: Human (Identities = 100%, Positives = 100%)

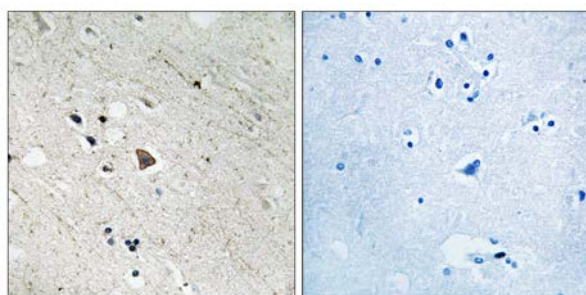
Applications: WB: 1:500~1:1000 IHC: 1:50~1:100
ELISA: 1:5000

References:

Small D., Proc. Natl. Acad. Sci. U.S.A. 91:459-463(1994).

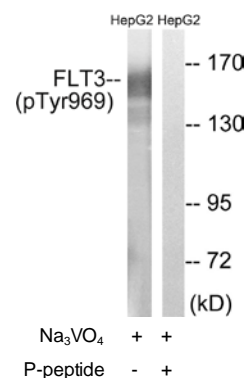
Rosnet O., Blood 82:1110-1119(1993).

Rosnet O., Genomics 9:380-385(1991).



P-peptide - +

Immunohistochemistry analysis of paraffin-embedded human brain tissue using FLT3 (Phospho-Tyr969) antibody.



Western blot analysis of extracts from HepG2 cells, treated with Na_3VO_4 (0.3mM, 40mins), using FLT3 (Phospho-Tyr969) antibody.

For Research Use Only