



## ILK (Phospho-Ser246) Antibody

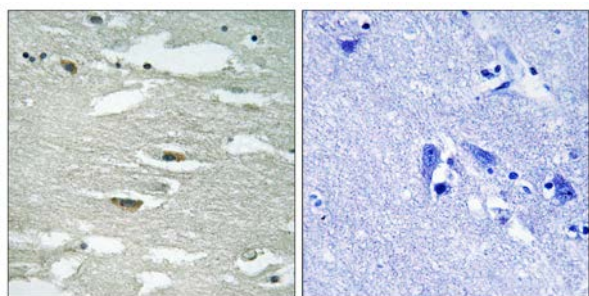
**E11-8115A****Catalog Number:** E11-8115A**Concentration:** 1mg/ml**Swiss-Prot No.:** Q13418**Other Names:** 59 kDa serine/threonine protein kinase;  
EC 2.7.11.1; ILK-1; ILK1; Integrin-linked protein kinase;  
Integrin-linked protein kinase 1; kinase ILK; p59ILK**All Sites:** Human: Ser246; Mouse: Ser246; Rat: Ser246**Storage/Stability:** Store at -20 °C/1 year**Form of Antibody:** Rabbit IgG in phosphate buffered  
saline (without  $Mg^{2+}$  and  $Ca^{2+}$ ), pH 7.4, 150mM NaCl,  
0.02% sodium azide and 50% glycerol.**Immunogen:** The antiserum was produced against  
synthesized phosphopeptide derived from human ILK  
around the phosphorylation site of serine 246  
(I-F-S<sup>P</sup>-H-P).**Purification:** The antibody was affinity-purified from  
rabbit antiserum by affinity-chromatography using

epitope-specific phosphopeptide. The antibody against  
non-phosphopeptide was removed by chromatography  
using non-phosphopeptide corresponding to the  
phosphorylation site.

**Specificity:** ILK (Phospho-Ser246) antibody detects  
endogenous levels of ILK only when phosphorylated at  
serine 246.**Reactivity:** Human (Identities = 100%, Positives = 100%);  
Mouse (Identities = 100%, Positives = 100%);  
Rat (Identities = 100%, Positives = 100%)**Applications:** IHC: 1:50~1:100 ELISA: 1:1000**References:**

Hannigan G.E., Nature 379:91-96(1996).

Janji B., Oncogene 19:3069-3077(2000).

Tadic B., Submitted (MAR-2000) to the  
EMBL/GenBank/DDBJ databases.

P-peptide

-

+

Immunohistochemistry analysis of paraffin-embedded  
human brain tissue using ILK (Phospho-Ser246) antibody.

**For Research Use Only**