



LKB1 (Phospho-Ser334) Antibody

E11-8127A

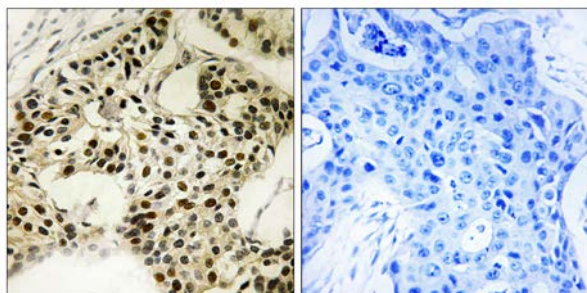
Catalog Number: E11-8127A**Concentration:** 1mg/ml**Swiss-Prot No.:** Q15831**Other Names:** Serine/threonine-protein kinase LKB1;
Renal carcinoma antigen NY-REN-19**All Sites:** Human: Ser334; Mouse: Ser334**Storage/Stability:** Store at -20°C/1 year**Form of Antibody:** Rabbit IgG in phosphate buffered saline (without Mg^{2+} and Ca^{2+}), pH 7.4, 150mM NaCl, 0.02% sodium azide and 50% glycerol.**Immunogen:** The antiserum was produced against synthesized phosphopeptide derived from human LKB1 around the phosphorylation site of serine 334 (W-R-S^P-M-T).**Purification:** The antibody was affinity-purified from

rabbit antiserum by affinity-chromatography using epitope-specific phosphopeptide. The antibody against non-phosphopeptide was removed by chromatography using non-phosphopeptide corresponding to the phosphorylation site.

Specificity: LKB1 (Phospho-Ser334) antibody detects endogenous levels of LKB1 only when phosphorylated at serine 334.**Reactivity:** Human, Mouse**Applications:** IHC: 1:50~1:100 ELISA: 1:10000**References:**

Nezu J., Submitted (AUG-1996) to the EMBL/GenBank/DDBJ databases.

Jenne D.E., Nat. Genet. 18:38-43(1998).



P-peptide

-

+

Immunohistochemistry analysis of paraffin-embedded human breast carcinoma tissue, using LKB1 (Phospho-Ser334) antibody.

For Research Use Only